

Keysight X-Series Signal Analyzer

This manual provides documentation for the following X-Series Analyzers running the Microsoft Windows 7 operating system:

UXA Signal Analyzer N9040B

PXA Signal Analyzer N9030B

MXA Signal Analyzer N9020B

EXA Signal Analyzer N9010B

CXA Signal Analyzer N9000B

Getting Started and
Troubleshooting
Guide

Notices

© Keysight Technologies, Inc.
2015–2016

No part of this manual may be reproduced in any form or by any means (including electronic storage and retrieval or translation into a foreign language) without prior agreement and written consent from Keysight Technologies, Inc. as governed by United States and international copyright laws.

Trademark Acknowledgements

Manual Part Number

N9040-90015

Publication Date

April 2016

Edition 1

Supersedes: March 2016

Published in USA

Keysight Technologies Inc.
1400 Fountaingrove Parkway
Santa Rosa, CA 95403

Warranty

THE MATERIAL CONTAINED IN THIS DOCUMENT IS PROVIDED “AS IS,” AND IS SUBJECT TO BEING CHANGED, WITHOUT NOTICE, IN FUTURE EDITIONS. FURTHER, TO THE MAXIMUM EXTENT PERMITTED BY APPLICABLE LAW, KEYSIGHT DISCLAIMS ALL WARRANTIES, EITHER EXPRESS OR IMPLIED WITH REGARD TO THIS MANUAL AND ANY INFORMATION CONTAINED HEREIN, INCLUDING BUT NOT LIMITED TO THE IMPLIED WARRANTIES OF MERCHANTABILITY AND FITNESS FOR A PARTICULAR PURPOSE. KEYSIGHT SHALL NOT BE LIABLE FOR ERRORS OR FOR INCIDENTAL OR CONSEQUENTIAL DAMAGES IN CONNECTION WITH THE FURNISHING, USE, OR PERFORMANCE OF THIS DOCUMENT OR ANY INFORMATION CONTAINED HEREIN. SHOULD KEYSIGHT AND THE USER HAVE A SEPARATE WRITTEN AGREEMENT

WITH WARRANTY TERMS COVERING THE MATERIAL IN THIS DOCUMENT THAT CONFLICT WITH THESE TERMS, THE WARRANTY TERMS IN THE SEPARATE AGREEMENT WILL CONTROL.

Technology Licenses

The hardware and/or software described in this document are furnished under a license and may be used or copied only in accordance with the terms of such license.

U.S. Government Rights

The Software is “commercial computer software,” as defined by Federal Acquisition Regulation (“FAR”) 2.101. Pursuant to FAR 12.212 and 27.405-3 and Department of Defense FAR Supplement (“DFARS”) 227.7202, the U.S. government acquires commercial computer software under the same terms by which the software is customarily provided to the public.

Accordingly, Keysight provides the Software to U.S. government customers under its standard commercial license, which is embodied in its End User License Agreement (EULA), a copy of which can be found at <http://www.keysight.com/find/sweula>. The license set forth in the EULA represents the exclusive authority by which the U.S. government may use, modify, distribute, or disclose the Software. The EULA and the license set forth therein, does not require or permit, among other things, that Keysight: (1) Furnish technical information related to commercial computer software or commercial computer software documentation that is not customarily provided to the public; or (2) Relinquish to, or otherwise provide, the government rights in excess of these rights customarily provided to the public to use, modify, reproduce, release, perform,

display, or disclose commercial computer software or commercial computer software documentation. No additional government requirements beyond those set forth in the EULA shall apply, except to the extent that those terms, rights, or licenses are explicitly required from all providers of commercial computer software pursuant to the FAR and the DFARS and are set forth specifically in writing elsewhere in the EULA. Keysight shall be under no obligation to update, revise or otherwise modify the Software. With respect to any technical data as defined by FAR 2.101, pursuant to FAR 12.211 and 27.404.2 and DFARS 227.7102, the U.S. government acquires no greater than Limited Rights as defined in FAR 27.401 or DFAR 227.7103-5 (c), as applicable in any technical data.

Safety Notices

CAUTION

A **CAUTION** notice denotes a hazard. It calls attention to an operating procedure, practice, or the like that, if not correctly performed or adhered to, could result in damage to the product or loss of important data. Do not proceed beyond a CAUTION notice until the indicated conditions are fully understood and met.

WARNING

A **WARNING** notice denotes a hazard. It calls attention to an operating procedure, practice, or the like that, if not correctly performed or adhered to, could result in personal injury or death. Do not proceed beyond a WARNING notice until the indicated conditions are fully understood and met.

In This Guide...

This guide contains the following information:

1 Quick-Start

This chapter explains how to initialize the signal analyzer and view a signal.

2 Front and Rear Panel Features

Refer to this chapter for information on front- and rear-panel key functionality, and display annotations.

3 Instrument Operating System

This chapter describes the Microsoft Windows 7 configuration and the settings used with the Keysight instrument software.

4 Using Windows Tools

The information in this chapter provides some guidelines for using the Microsoft Windows 7 feature capabilities with the signal analyzer.

5 Troubleshooting

This chapter details some basic steps that may solve any problems you are experiencing with either the signal analyzer or Microsoft Windows 7.

Where to Find the Latest Information

Documentation is updated periodically. For the latest information about these products, including instrument software upgrades, application information, and product information, browse to one of the following URLs, according to the name of your product:

<http://www.keysight.com/find/N9040B>

<http://www.keysight.com/find/N9030B>

<http://www.keysight.com/find/N9020B>

<http://www.keysight.com/find/N9010B>

<http://www.keysight.com/find/N9000B>

To receive the latest updates by email, subscribe to Keysight Email Updates at the following URL:

<http://www.keysight.com/find/MyKeysight>

Information on preventing analyzer damage can be found at:

<http://www.keysight.com/find/PreventingInstrumentRepair>

Is your product software up-to-date?

Periodically, Keysight releases software updates to fix known defects and incorporate product enhancements. To search for software updates for your product, go to the Keysight Technical Support website at:

<http://www.keysight.com/find/techsupport>

Table of Contents

1 Quick Start

Initial Inspection	10	
Verify the Contents	10	
Shipping Problems?	10	
Instrument Location and Rack Mounting Requirements		11
Locating the analyzer	11	
Cooling and rack mounting	11	
Turning on the Analyzer the First Time		12
Initializing the analyzer	12	
Anti-Virus Software and Firewalls		16
Instrument Information	17	
Power requirements	17	
Protecting Against Overpowering		18
Instrument Maintenance	18	
Protecting against electrostatic discharge		20

2 Front and Rear Panel Features

Front-Panel Features	22	
Display Features	25	
Screen Tabs	25	
Meas Bar	26	
Measurement Display	27	
Menu Panel	28	
Bottom Bar	30	
Rear-Panel Features	31	
Front and Rear Panel Symbols		35

3 Instrument Operating System

Microsoft Windows	38	
-------------------	----	--

Contents

Windows Help and Support Center	38
Installed Software	39
Signal analyzer software	39
Vector signal analyzer software	39
Customer installation of software	40
3rd Party Software verified by Keysight	40
Installation of other 3rd Party Software	40
User Accounts	41
Administrator account	41
Instrument accounts	41
Power Users accounts	41
KeysightOnly user account	42
Service user accounts	42
Customer creation of accounts	42
Keysight X-Series Analyzer Licensing Options	43
Licensing New Measurement Application Software - After Initial Purchase	44
Installation procedure over USB	44
Windows Configuration	46
Settings that can be changed	46
Settings that must not be changed	47
Autoplay/Autorun	49
Configuring Printers	50
Configuring LAN	51
Hostname	51
IP Address & Gateway	51
Connecting to a Network Shared Folder	51
Windows Security	53
Windows Firewall	53
Automatic Updates	53
Virus Protection	54
Spyware Protection	54

System Maintenance	55
Backup	55
System Restore	55
Disk Defragmenting	55
USB Connections	56
Disk Drive Partitioning and Use	57
Backing-up the factory calibration data	57
Disk Drive Recovery Process	59
Updating the software	61

4 Using Windows Tools

Navigating Windows Without a Mouse	66
Remote Desktop: Using the X-Series Signal Analyzers Remotely	67
Overview of Remote Desktop operation	67
Setting up Remote Desktop operation	68
How to locate the computer name of the instrument	69
Running a Remote Desktop session	70
Embedded Web Server: Using the X-Series Signal Analyzers Remotely	76
Browsers that support UXA Embedded Web Server (these versions or later)	76
Accessing the instrument through the Internet	76
Accessing the Web Control SA tab	80
Selecting the Get Data tab	81
Selecting the Get Image tab	82
Selecting the SCPI Telnet tab	83
Selecting the Help tab	84
Windows Shortcuts and Miscellaneous Tasks	85
Windows shortcuts (key combinations)	85
Windows taskbar auto-hide feature	86

5 Troubleshooting

Check the Basics	88
------------------	----

Contents

Problems with Microsoft Windows 7	90
Returning an Analyzer for Service	91
Calling Keysight Technologies	91
Locations for Keysight Technologies	92
Read the Warranty	92
Service Options	93
Packaging the Instrument	94

1 Quick Start

This section explains how to initialize the Signal Analyzer and view a signal.

The following topics can be found in this section:

[“Initial Inspection” on page 10](#)

[“Instrument Location and Rack Mounting Requirements” on page 11](#)

[“Turning on the Analyzer the First Time” on page 12](#)

[“Anti-Virus Software and Firewalls” on page 16](#)

[“Instrument Information” on page 17](#)

Initial Inspection

Inspect the shipping container and the cushioning material for signs of stress. Retain the shipping materials for future use, as you may wish to ship the analyzer to another location or to Keysight Technologies for service.

Verify the Contents

Verify the shipping container contents using the box contents list.

Shipping Problems?

If the shipping materials are damaged or the contents of the container are incomplete:

- Contact the nearest Keysight Technologies office.
- Keep the shipping materials for the carrier's inspection.
- If you must return an analyzer to Keysight Technologies, use the original (or comparable) shipping materials. See **“Returning an Analyzer for Service” on page 91**.

Instrument Location and Rack Mounting Requirements

Locating the analyzer

Make sure that the fan inlet and exhaust vent areas on the sides of the analyzer are not obstructed. The minimal required clearance is 2 inches. Airflow restrictions cause additional airflow noise and cause the fans to speed up so they can draw in enough air for the required cooling. This results in excessive audible noise.

Cooling and rack mounting

Do not rack mount the analyzer side-by-side with any other instrument with side-by-side ventilation. Make sure the exhaust air from the first instrument is directed away from the inlet of the second unit. If the pre-heated air from the first instrument is directed into the second instrument, it can cause excessive operating temperatures in the second unit and can cause instrument failures. The analyzer draws air in from the left side and exhausts air from the right side.

CAUTION

When installing the product in a cabinet, the convection into and out of the product must not be restricted. The ambient temperature (outside the cabinet) must be less than the maximum operating temperature of the product by 4° C for every 100 watts dissipated in the cabinet. If the total power dissipated in the cabinet is greater than 800 watts, then forced convection must be used.

Turning on the Analyzer the First Time

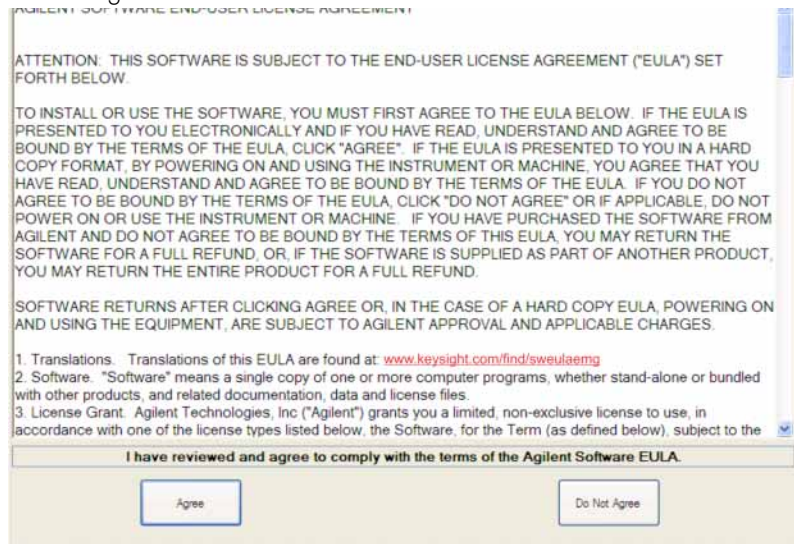
Initial power-on of the analyzer can be accomplished using the following methods:

NOTE

During the initial power-on process, the instrument turns off and restarts several times. This **only** happens during the initial installation process

Initializing the analyzer

Steps	Actions	Notes
1. Power on the analyzer	<p>a. Position the analyzer so you have easy access to the power cord and plug it in.</p> <p>b. Press the power switch (located in the lower left corner of the analyzer's front panel) to turn the analyzer on.</p>	<p>See “Instrument Location and Rack Mounting Requirements and “Power requirements” on page 17 for more details.</p> <p>The analyzer can require more than 5 minutes to power-on. The Keysight Technologies screen appears followed by a screen that allows you to select Windows7 or the Recovery option.</p>
2. Launch Microsoft Setup	<p>The analyzer performs the following steps:</p> <ul style="list-style-type: none">• Windows 7 Startup window• Black screen• Windows Please wait message window• The following window appears giving you information about the End-User License Agreement.	



At this time, it is safe to turn off the instrument before initializing the software.

Quick Start
Turning on the Analyzer the First Time

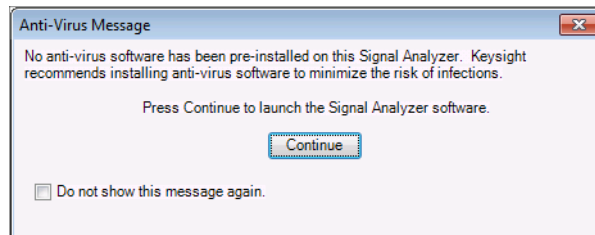
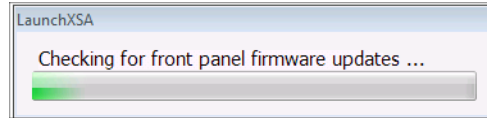
Steps	Actions	Notes
-------	---------	-------

CAUTION

After launching the setup, do not turn off the instrument or remove power before the Setup Wizard completes and the system restarts. Turning off the instrument may corrupt the system and the application may not operate.

3. Reboot and logon – Click **OK**

When the instrument restarts, the following message window appears:



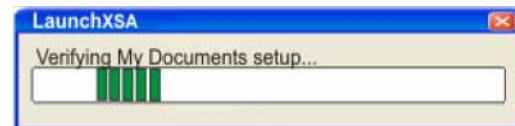
This window appears and covers the Launch window.

NOTE

If you do not check the “Do not show this message again” check box, this message will be displayed each time the analyzer is turned on. No application will start while this message is displayed. Before continuing, make sure that you carefully read the Anti-Virus message and determine what action is appropriate.

4. Disable the Anti-Virus message – Select the check box and click **Continue**.

Messages similar to the following continue to appear:

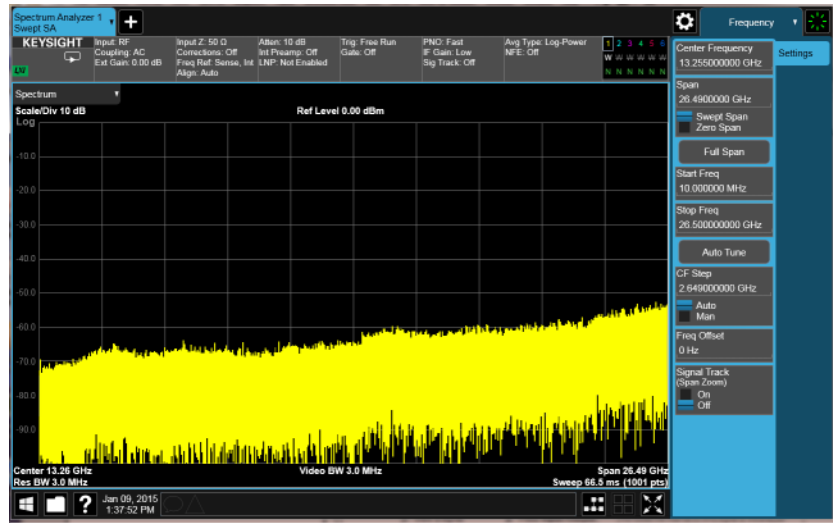


Several required processes continue.
The application initializes

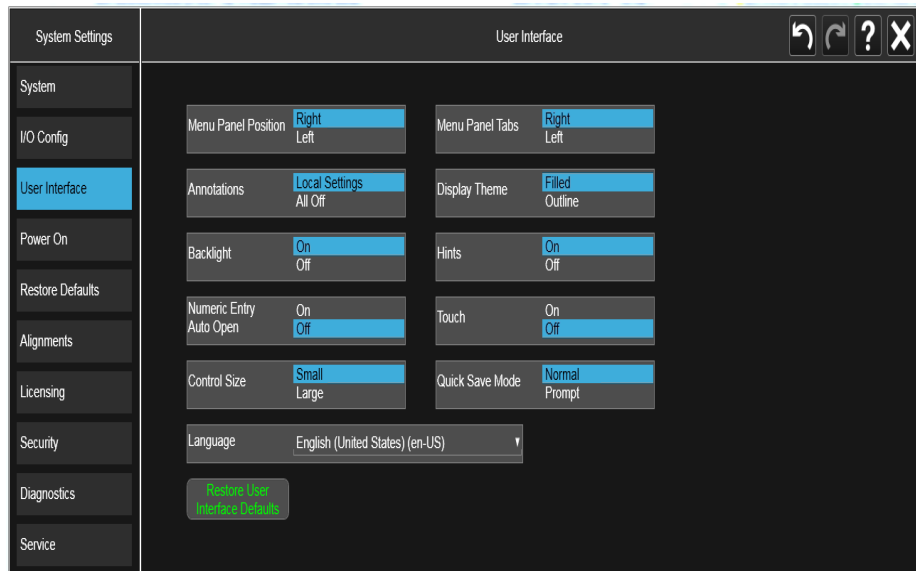
Quick Start
Turning on the Analyzer the First Time

Steps	Actions	Notes
-------	---------	-------

5. When the installation is complete, you should see a display like this:



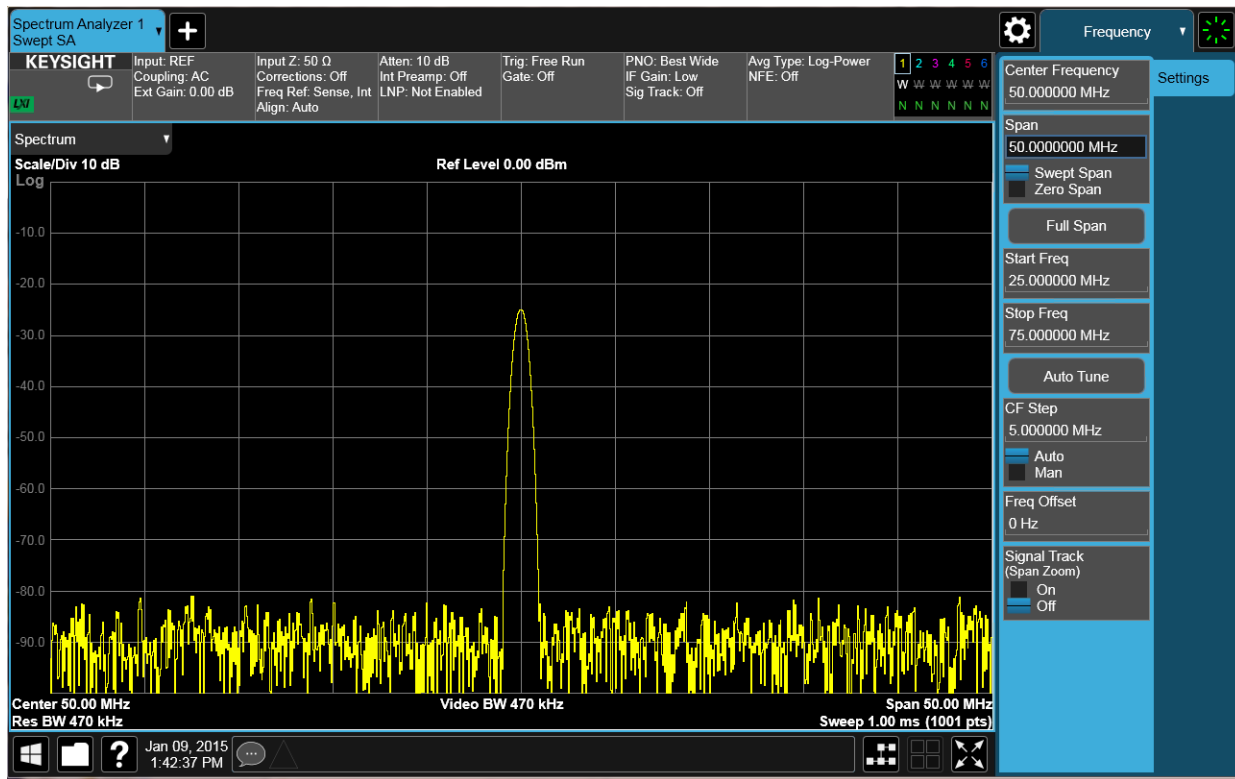
6. Set user interface language
- On the instrument, press **System, Interface Settings**.
 - Choose the desired language from the Language drop-down menu.



Quick Start
Turning on the Analyzer the First Time

Steps	Actions	Notes
7. Verify the installation	<ol style="list-style-type: none"> On the instrument, press System, Show System. Verify that the purchased application(s) appear in the list. 	<p>If you require further assistance, contact the Keysight support team. Online assistance: http://www.keysight.com/find/assist</p>
8. View a signal	<ol style="list-style-type: none"> Press Input/Output, RF Calibrator, 50 MHz. Press FREQ, Center Freq, 50, MHz. Press SPAN, 50, MHz. 	<p>This routes the internal 50 MHz signal to the analyzer input.</p>

The 50 MHz reference signal appears on the display.



Anti-Virus Software and Firewalls

No anti-virus software is shipped with the analyzer. It is recommended that you install anti-virus software if your analyzer is connected to the LAN. Check with your IT department to see what they recommend.

The analyzer is shipped with the Windows 7 firewall enabled.

Do not modify the default network settings as this may cause problems with the operating system of the analyzer.

Instrument Information

Power requirements

The only physical installation of your Keysight signal analyzer is a connection to a power source. Line voltage does **not** need to be selected.

This analyzer does **not** contain customer serviceable fuses.

NOTE

The instruments can operate with mains supply voltage fluctuations up to $\pm 10\%$ of the nominal voltage.

WARNING

This is a Safety Class 1 Product (provided with a protective earthing ground incorporated in the power cord). The mains plug shall only be inserted in a socket outlet provided with a protective earth contact. Any interruption of the protective conductor inside or outside of the product is likely to make the product dangerous. Intentional interruption is prohibited. (IEC 348 clauses 17.3.3c & 17.3.4)

Failure to ground the analyzer properly can result in personal injury. Before turning on the analyzer, you must connect its protective earth terminals to the protective conductor of the main power cable. Insert the main power cable plug into a socket outlet that has a protective earth contact only. DO NOT defeat the earth-grounding protection by using an extension cable, power cable, or autotransformer without a protective ground conductor.

CAUTION

This product is designed for use in Installation Category II and Pollution Degree 2 per IEC 61010 Second Edition and IEC 664 respectively.

This instrument has autoranging line voltage input. Be sure the supply voltage is within the specified range.

The Mains wiring and connectors shall be compatible with the connector used in the premise electrical system. Failure, to ensure adequate earth grounding by not using the correct components may cause product damage, and serious injury.

AC power cord

The analyzer is equipped with a three-wire power cord, in accordance with international safety standards. This cable grounds the analyzer cabinet when connected to an appropriate power line outlet. The cable appropriate to the original shipping location is included with the analyzer. See:

<http://www.keysight.com/find/powercords>

CAUTION

Always use the three-prong AC power cord supplied with this product. Failure to ensure adequate earth grounding by not using this cord can cause product damage.

WARNING

If this product is not used as specified, the protection provided by the equipment could be impaired. This product must be used in a normal condition (in which all means for protection are intact) only.

Install the instrument so that the detachable power cord is readily identifiable and easily reached by the operator. The detachable power cord is the instrument disconnecting device. It disconnects the mains circuits from the mains supply before other parts of the instrument. The front panel switch is only a standby switch and is not a LINE switch. Alternatively, an externally installed switch or circuit breaker (which is readily identifiable and is easily reached by the operator) may be used as a disconnecting device.

Protecting Against Overpowering

The input circuitry of the analyzer can be damaged by applying signals that exceed the maximum safe input level of +30 dBm average total power or +/- 0.2 Vdc (when DC coupled) or +/- 70 Vdc (when AC coupled). Refer to the analyzer's specification guide for more details regarding the Maximum Safe Input Level. Repairing damage to the input circuitry can be expensive.

If the analyzer will be used to measure signals which might be near the maximum safe input level, use external attenuators and/or limiters to help protect the analyzer input. The External Gain, amplitude Corrections, and/or Ref Lvl Offset features may be used to compensate for the gains and losses of external devices. External Gain and Corrections are under the Input/Output menu and Ref Lvl Offset is under the AMPTD Y-Scale menu.

Instrument Maintenance

Cleaning the instrument

WARNING

To prevent electrical shock, disconnect the signal analyzer from mains before cleaning. Use a dry cloth or one slightly dampened with water to clean the external case parts. Do not attempt to clean internally.

Cleaning Connectors

Cleaning connectors with alcohol shall only be done with the instrument power cord removed, and in a well-ventilated area. Allow all residual alcohol moisture to evaporate, and the fumes to dissipate prior to energizing the instrument.

WARNING

Keep isopropyl alcohol away from heat, sparks, and flame. Store in a tightly closed container. It is extremely flammable. In case of fire, use alcohol foam, dry chemical, or carbon dioxide; water may be ineffective.

Use isopropyl alcohol with adequate ventilation and avoid contact with eyes, skin, and clothing. It causes skin irritation, may cause eye damage, and is harmful if swallowed or inhaled. It may be harmful if absorbed through the skin. Wash thoroughly after handling.

In case of spill, soak up with sand or earth. Flush spill area with water.

Dispose of isopropyl alcohol in accordance with all applicable federal, state, and local environmental regulations.

Battery Information

The analyzer uses a lithium battery located on the CPU board. This is not an operator replaceable part. See **“Returning an Analyzer for Service” on page 91**. Replaceable parts must be approved or supplied by Keysight Technologies.

You can order the service documentation for the instrument through your Keysight Sales and Service office.

WARNING

Danger of explosion if battery is incorrectly replaced. Replace only with the same or equivalent type recommended. Discard used batteries according to the manufacturer’s instructions.

Do not throw batteries away but collect as small chemical waste.



**DO NOT THROW BATTERIES AWAY BUT
COLLECT AS SMALL CHEMICAL WASTE.**

Protecting against electrostatic discharge

Electrostatic discharge (ESD) can damage or destroy electronic components (the possibility of unseen damage caused by ESD is present whenever components are transported, stored, or used).

Test equipment and ESD

To help reduce ESD damage that can occur while using test equipment:

WARNING

Do not use these first three techniques when working on circuitry with a voltage potential greater than 500 volts.

-
- Before connecting any coaxial cable to an analyzer connector for the first time each day, momentarily short the center and outer conductors of the cable together.
 - Personnel should be grounded with a 1 M Ω resistor-isolated wrist-strap before touching the center pin of any connector and before removing any assembly from the analyzer.
 - Be sure that all instruments are properly earth-grounded to prevent build-up of static charge.
 - Perform work on all components or assemblies at a static-safe workstation.
 - Keep static-generating materials at least one meter away from all components.
 - Store or transport components in static-shielding containers.
 - Always handle printed circuit board assemblies by the edges. This reduces the possibility of ESD damage to components and prevent contamination of exposed plating.

Additional information about ESD

For more information about ESD and how to prevent ESD damage, contact the Electrostatic Discharge Association (<http://www.esda.org>). The ESD standards developed by this agency are sanctioned by the American National Standards Institute (ANSI).

2 Front and Rear Panel Features

This section describes the following features:

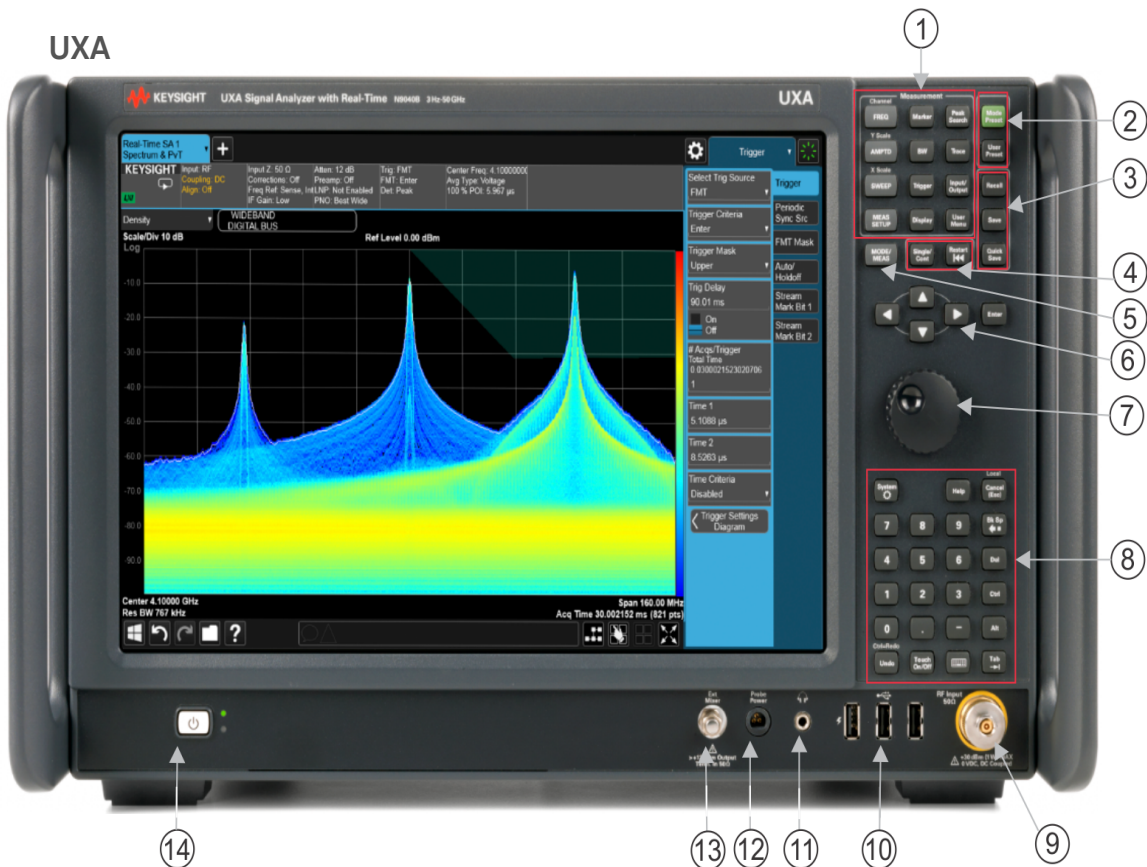
“Front-Panel Features” on page 22

“Display Features” on page 25

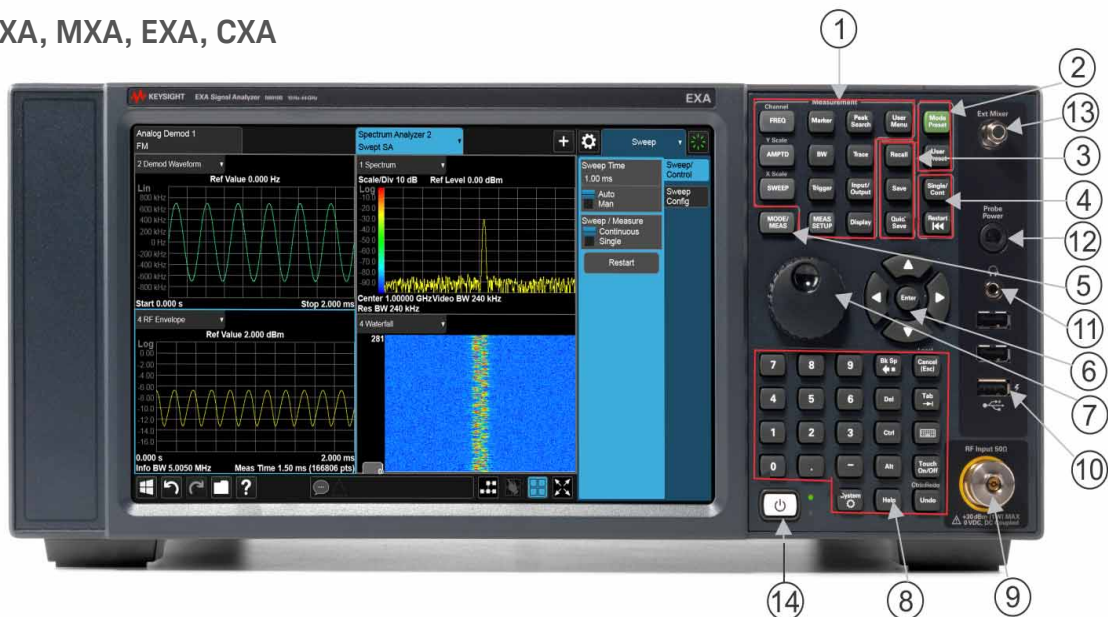
“Rear-Panel Features” on page 31

“Front and Rear Panel Symbols” on page 35

Front-Panel Features



PXA, MXA, EXA, CXA



Front and Rear Panel Features
 Front-Panel Features

Item		Description
#	Name	
1	Measurement Keys	These keys (in the shaded area) enable you to set the parameters used for making measurements in the current Mode and Measurement.
2	Preset Keys	Mode Preset - local to the current mode, global to all measurements in the mode, affects most but not all parameters in the mode, does not affect Input/Output or System variables User Preset - local to the current mode, global to all measurements in the mode, affects all parameters in the mode as well as the Input/Output variables. Does not affect System variables.
3	Save/Recall Keys	Save - enables you to save states, traces, screen images and other items from the analyzer to files on the analyzer's internal storage, to removable devices, and to directories on the network. Recall - enables you to recall previously saved states, traces and other items to the analyzer from files on the analyzer's internal storage, from removable devices, and from directories on the network.
4	Sweep Keys	Single/Cont - toggles between single and continuous measurement sweeps. Restart - restarts the measurement.
5	Mode/Measurement Key	This key enables you to select the desired Mode (measurement application), Measurement, and/or View.
6	Enter and Arrow Keys	The Enter key terminates data entry when either no unit of measure is needed, or you want to use the current unit. The arrow keys: <ul style="list-style-type: none"> – Increment and decrement the value of the current measurement selection. (up/down = big increment, left/right = small increment) – Navigate help topics. – Navigate or make selections within Windows dialogs. – Navigate within forms used for setting up measurements. – Navigate within tables.
7	Knob	Increments and decrements the value of the current active function.
8	Utility Keys	The following keys are available in the Utility section: Numeric key pad System Help Local/Cancel/(Esc) Back-space Delete Control Alt Undo/Redo Touch On/Off Onscreen Keyboard Tab

Front and Rear Panel Features
 Front-Panel Features

Item		Description
#	Name	
9	RF Input	Connector for inputting an external signal. Make sure that the total power of all signals at the analyzer input does not exceed +30 dBm (1 watt).
10	USB Connectors	Standard USB 2.0 ports, Type A. Connect to external peripherals such as a mouse, keyboard, DVD drive, or hard drive.
11	Headphones Output	Headphones can be used to hear any available audio output.
12	Probe Power	Supplies power for external high frequency probes and accessories.
13	Ext Mixer	Provides LO output signal to and receives IF input signals from an external mixer. See the Specifications Guide for details on signal levels. Not available on CXA.
14	Power Standby/ On	Turns the analyzer on. A green light indicates power on. A yellow light indicates standby mode. <div style="background-color: #cccccc; padding: 5px; display: inline-block;">NOTE</div> The front-panel switch is a standby switch, not a LINE switch (disconnecting device). The analyzer continues to draw power even when the front-panel switch is in standby. The main power cord can be used as the system disconnecting device. It disconnects the mains circuits from the mains supply.

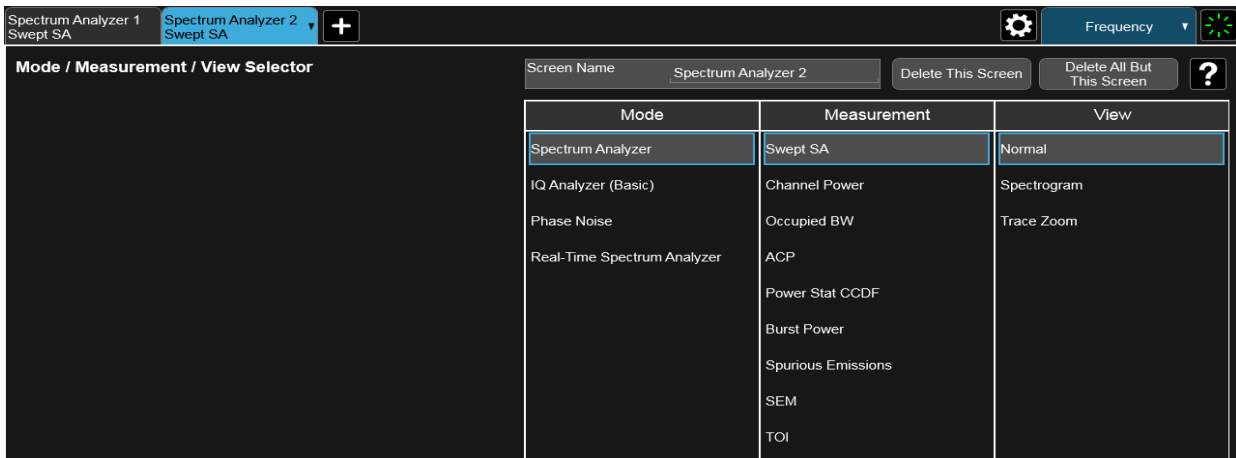
Display Features

This section describes the regions of the display.



Screen Tabs

Along the top of the display are tabs, one for each measurement screen you have defined. Tap the + sign to "clone" the current measurement, which can be changed once it is created. Tap the current screen tab (or press the Mode/Meas hardkey) to display the following dialog:



This dialog allows you to choose a Mode, Measurement and View.


Front and Rear Panel Features Display Features

When you select a mode, the measurements that are available in the mode are displayed in the Measurement column.

When you select the desired measurement, the views available for the measurement are displayed under the View column.

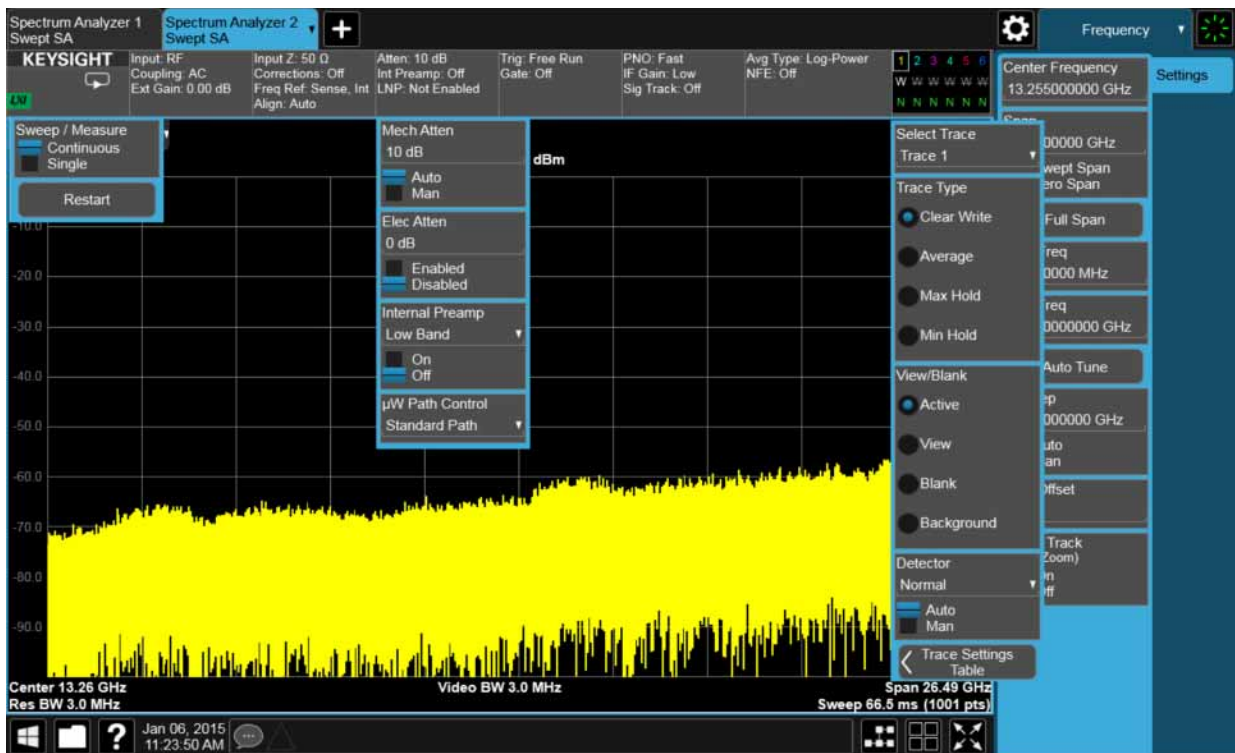
You can have up to 16 measurement tabs, but only 6 can be viewed at one time. If the tabs overflow the top bar, they scroll left and right using the arrows to the left and right of the tabs.

You switch screens by touching the tabs. To view multiple screens, press the

 icon on the Bottom Bar.

Meas Bar

The Meas Bar shows general measurement settings and information. The annotations on this bar can be used to change settings. Tap anywhere in the annotation box to access the drop-down panel that contains relevant parameters. The following graphic shows some of the drop-down menus and the parameters they contain.



  Indicates single/continuous measurement.

Measurement Display

This area shows the measurement results in graphical and tabular form. You can interact with this area using pinch, drag, scroll and tap gestures.

On the signal:

Horizontal pinch - changes the span of the analyzer

Horizontal drag - changes the center frequency

Vertical pinch - changes the vertical scaling

Vertical drag - changes the reference level

Markers may be moved by dragging them to the desired location

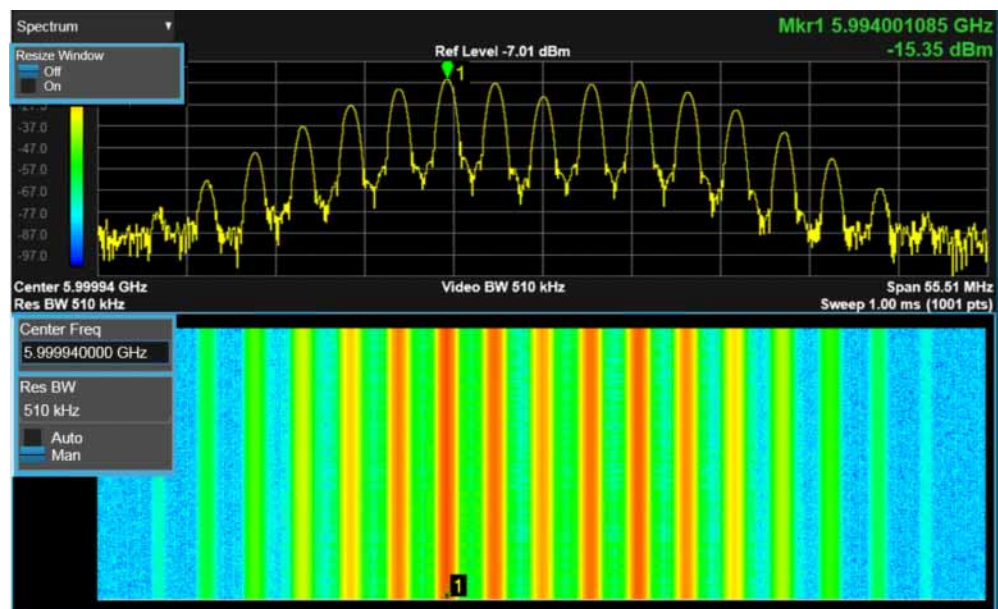
Touch and hold - simulates a right click

Swipe scroll - allows you to view information that extends beyond the window area. When you begin to scroll, the scroll bar appears and fades once you stop scrolling.

For demonstrations on these gestures and how they can be used on the UXA go to:


<http://www.youtube.com/playlist?list=PLmqzNmmPZGY9sgctxx5dP6hyZoUxNp4lC>

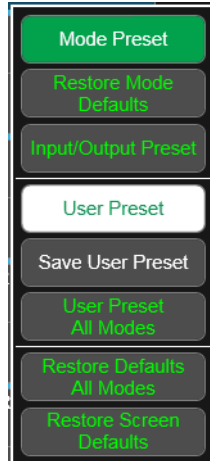
The annotation drop-downs in the window area allow you to change parameters. The window title drop-down allows you to resize the windows in the multi-window format. When you tap in those areas, the drop-down control menus appear as shown in the following graphic.




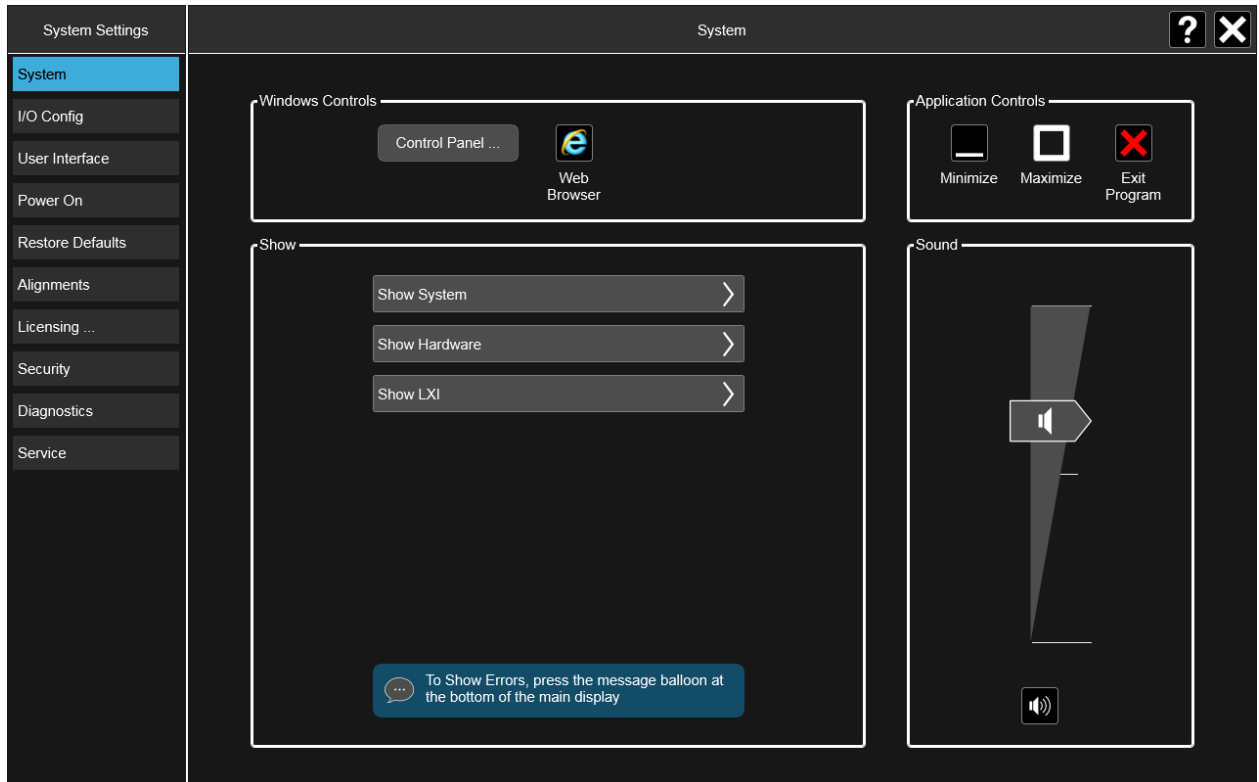
Menu Panel

At the top of the menu panels are two icons:

The Preset icon  accesses the following control menu:

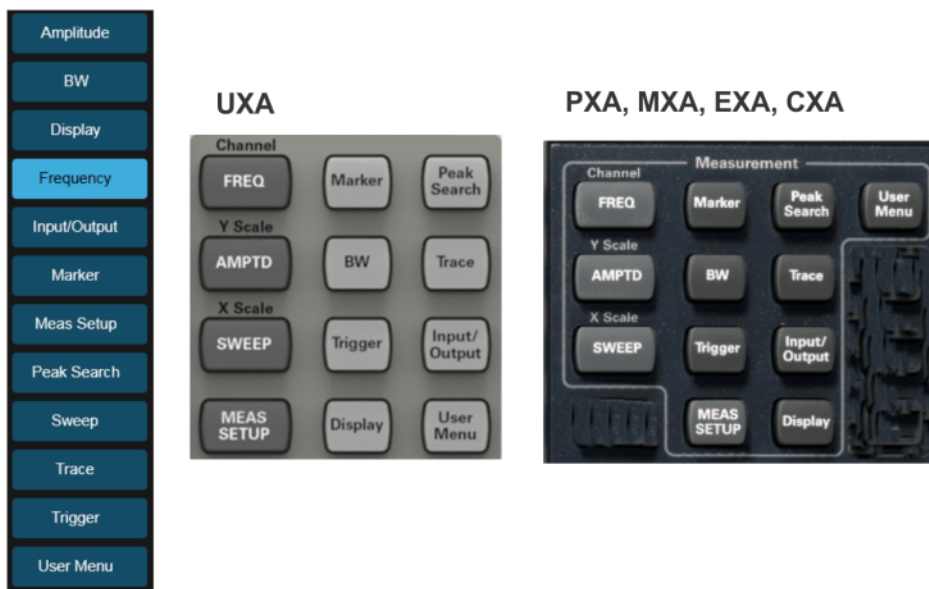


The System icon  accesses the following dialog:

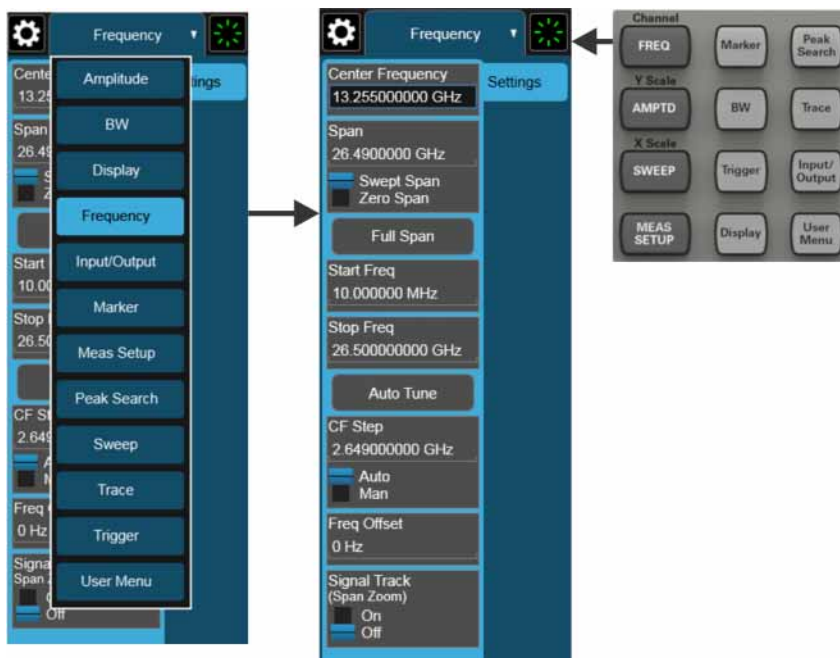


Front and Rear Panel Features Display Features

The hardkey drop-down panel contains the measurement controls. These are the same as the hardkeys in the shaded area of the keypad:

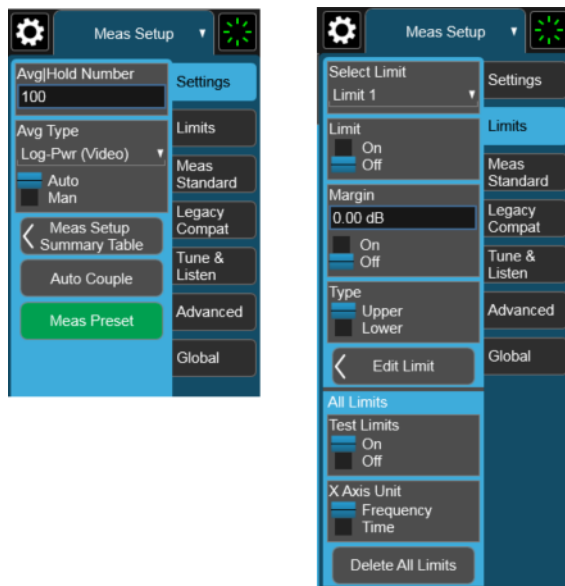


You can select functions using either the keypad or the drop-down menu.



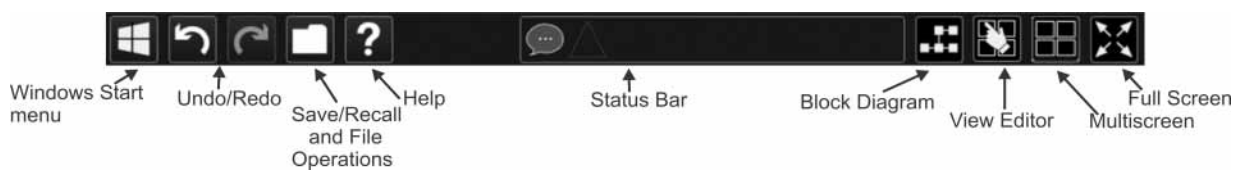
Front and Rear Panel Features Display Features

Notice that the Frequency panel has a Settings tab on the right side. Other panels may have multiple tabs. The tabs access controls for the particular parameter noted on the tab.



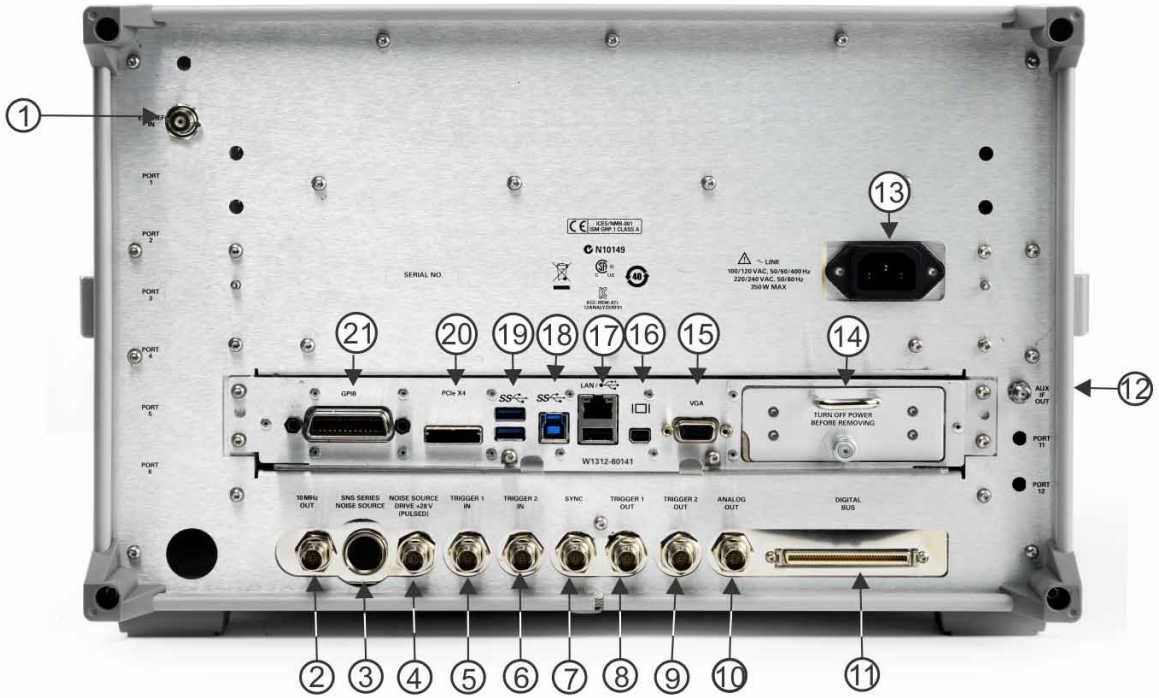
Bottom Bar

The bottom bar contains several icons that access various controls.

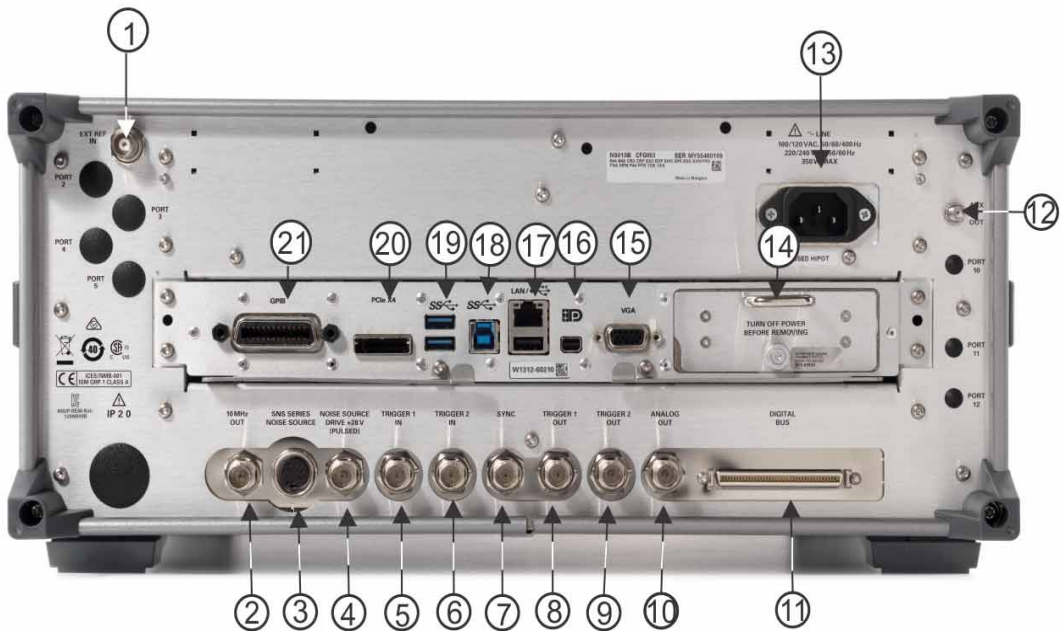


Rear-Panel Features

UXA



PXA, MXA and EXA



Front and Rear Panel Features
Rear-Panel Features

Item		Description
#	Name	
1	EXT REF IN	Input for an external frequency reference signal.
2	10 MHz OUT	An output of the analyzer internal 10 MHz frequency reference signal. It is used to lock the frequency reference of other test equipment to the analyzer.
3	SNS Series Noise Source	For use with Keysight N4000A, N4001A, N4002A Smart Noise Sources (SNS).
4	Noise Source Drive +28 V (Pulsed)	For use with Keysight 346A, 346B, and 346C Noise Sources.
5	TRIGGER 1 IN	Allows external triggering of measurements.
6	TRIGGER 2 IN	Allows external triggering of measurements.
7	Sync	Reserved for future use.
8	TRIGGER 1 OUT	A trigger output used to synchronize other test equipment with the analyzer. Configurable from the Input/Output keys.
9	TRIGGER 2 OUT	A trigger output used to synchronize other test equipment with the analyzer. Configurable from the Input/Output keys.
10	Analog Out	For Option YAV: Screen Video For Option YAS: Screen Video Log Video Linear Video For Option EMC: Demod Audio
11	Digital Bus	Reserved for future use
12	Aux IF Out	CR3 Second IF Out (PXA, MXA, and EXA) CRP Arbitrary IF Out (PXA, MXA, and EXA) ALV Log Video (PXA)
13	Line power input	The AC power connection. See the product specifications for more details.
14	Removable Disk Drive	Standard on all analyzers.
15	VGA	Allows connection of an external VGA monitor.
16	DisplayPort	Used for video output. Accepts a standard mini-display port connector, or adapter for connection of an external monitor.
17	LAN/USB	A TCP/IP Interface that is used for remote analyzer operation. USB 2.0 port, Type A Connect to external peripherals such as a mouse, keyboard, printer, DVD drive, or hard drive.

Front and Rear Panel Features
Rear-Panel Features

Item		Description
#	Name	
18	USB Connector	USB 3.0 port, Type B. USB TMC (test and measurement class) connects to an external pc controller to control the instrument and for data transfers over a 480 Mbps link.
19	USB Connectors	Standard USB 3.0 ports, Type A. Connect to external peripherals such as a mouse, keyboard, printer, DVD drive, or hard drive.
20	PCIe X4	Reserved for future use
21	GPIO	A General Purpose Interface Bus (GPIO, IEEE 488.1) connection that can be used for remote analyzer operation.

CXA



Item		Description
#	Name	
1	EXT REF IN	Input for an external frequency reference signal: For CXA – 10 MHz.
2	GPIO	A General Purpose Interface Bus (GPIO, IEEE 488.1) connection that can be used for remote analyzer operation.
3	PCIe X4	Reserved for future use
4	USB Connectors	Standard USB 2.0 ports, Type A. Connect to external peripherals such as a mouse, keyboard, printer, DVD drive, or hard drive.

Front and Rear Panel Features
Rear-Panel Features

Item		Description
#	Name	
5	USB Connector	USB 2.0 port, Type B. USB TMC (test and measurement class) connects to an external pc controller to control the instrument and for data transfers over a 480 Mbps link.
6	LAN/USB	A TCP/IP Interface that is used for remote analyzer operation. USB 2.0 port, Type A Connect to external peripherals such as a mouse, keyboard, printer, DVD drive, or hard drive.
7	DisplayPort	Used for video output. Accepts a standard mini-displayport connector, or adapter for connection of an external monitor.
8	VGA	Allows connection of an external VGA monitor.
9	Removable Disk Drive	Standard on all analyzers.
10	Line power input	The AC power connection. See the product specifications for more details.
11	Analog Out	For Option EMC: Demod Audio
12	TRIGGER 1 OUT	A trigger output used to synchronize other test equipment with the analyzer. Configurable from the Input/Output keys.
13	Sync	Reserved for future use.
14	TRIGGER 1 IN	Allows external triggering of measurements.
15	Noise Source Drive +28 V (Pulsed)	For use with Keysight 346A, 346B, and 346C Noise Sources.
16	SNS Series Noise Source	For use with Keysight N4000A, N4001A, N4002A Smart Noise Sources (SNS).
17	10 MHz OUT	An output of the analyzer internal 10 MHz frequency reference signal. It is used to lock the frequency reference of other test equipment to the analyzer.

Front and Rear Panel Symbols



This symbol is used to indicate power ON (green LED).



This symbol is used to indicate power STANDBY mode (yellow LED).



This symbol indicates the input power required is AC.



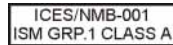
The instruction documentation symbol. The product is marked with this symbol when it is necessary for the user to refer to instructions in the documentation.



The CE mark is a registered trademark of the European Community.



The RCM mark is a registered trademark of the Australian Spectrum Management Agency.



This is a marking of a product in compliance with the Canadian Interference-Causing Equipment Standard (ICES-001).

This is also a symbol of an Industrial Scientific and Medical Group 1 Class A product (CISPR 11, Clause 4).



The CSA mark is a registered trademark of the CSA International.



This symbol indicates separate collection for electrical and electronic equipment mandated under EU law as of August 13, 2005. All electric and electronic equipment are required to be separated from normal waste for disposal (Reference WEEE Directive 2002/96/EC).



Indicates the time period during which no hazardous or toxic substance elements are expected to leak or deteriorate during normal use. Forty years is the expected useful life of the product.



This symbol on all primary and secondary packaging indicates compliance to China standard GB 18455-2001.



South Korean Class A EMC Declaration

A 급 기기 (업무용 방송통신기자재)

이 기기는 업무용 (A 급) 전자파적합기기로서 판매자 또는 사용자는 이 점을 주의하시기 바라 며, 가정외의 지역에서 사용하는 것을 목적으로 합니다.

This equipment is Class A suitable for professional use and is for use in electromagnetic environments outside of the home.

To return unwanted products, contact your local Keysight office.

Front and Rear Panel Features
Front and Rear Panel Symbols

3 Instrument Operating System

This chapter describes the Microsoft Windows 7, configuration and the settings used with the Keysight instrument software. It includes information about changing some of the system settings. And it describes the Windows operating system configuration and the software installations that are present on the Disk Drive when the instrument leaves the factory.

It is possible to use the front panel and touchscreen for changing operating system configuration items, but it is easier to perform these tasks with a USB mouse and external keyboard. For more useful shortcuts, see [“Navigating Windows Without a Mouse” on page 66](#).

The following topics can be found in this chapter:

[“Microsoft Windows” on page 38](#)

[“Installed Software ” on page 39](#)

[“Customer installation of software” on page 40](#)

[“User Accounts” on page 41](#)

[“Keysight X-Series Analyzer Licensing Options” on page 43](#)

[“Licensing New Measurement Application Software - After Initial Purchase” on page 44](#)

[“Windows Configuration” on page 46](#)

[“Configuring Printers” on page 50](#)

[“Configuring LAN” on page 51](#)

[“Windows Security” on page 53](#)

[“System Maintenance” on page 55](#)

[“USB Connections” on page 56](#)

[“Disk Drive Partitioning and Use” on page 57](#)

[“Disk Drive Recovery Process” on page 59](#)

Microsoft Windows

Your instrument has Microsoft Windows installed at the factory. Keysight has already configured many of the settings in Microsoft Windows for optimal behavior in your instrument. This chapter contains details about many of these settings.


Windows Help and Support Center

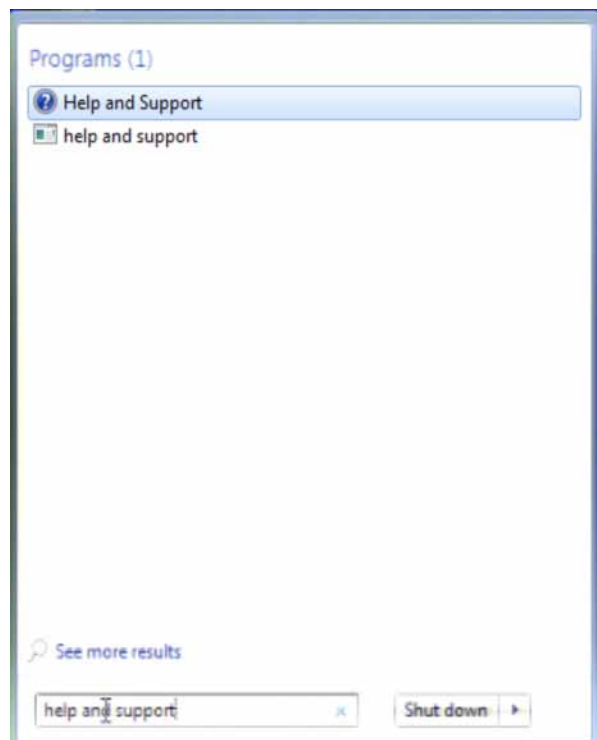
Throughout this chapter you will find references to the Windows Help and Support Center. To access the Windows Help and Support Center follow the instructions below, either on your PC or on the instrument itself.


NOTE

You must have an Internet connection to access the Windows Help and Support Center.

If the xSA is on-screen, tap the  (start) icon in the lower left corner of the display,.

Tap the Start icon  and enter “help and support” into the Search window.



Select  **Help and Support**

Installed Software

Signal analyzer software

The N9060C Spectrum Analyzer Measurement Application software is installed in the signal analyzer. Additional measurement applications are available. Each application requires a license to execute the software. All of these applications are installed by the factory at the time of manufacture, even if the licenses have not been purchased. You may purchase additional licenses at a later date.

Vector signal analyzer software

The 89600 VSA software is installed in the signal analyzer. This software was installed by the factory at the time of manufacture, even if the license was not purchased. You may purchase the license at a later date.

Customer installation of software

3rd Party Software verified by Keysight

Keysight has verified that the following programs are compatible with the instrument's applications:

- MathWorks MATLAB

Installation of other 3rd Party Software

The X-Series Signal Analyzer platform is an Open Windows environment, so you can install software on the instrument. However, installation of non-approved software may affect instrument performance. Keysight does not warrant the performance of the analyzers with non-approved software installed.

NOTE

Before installing any additional programs on the instrument, you should exit the Signal Analyzer application.

Also, you must not remove any applications or programs that were installed on the instrument when it was shipped from the factory.

If you install programs other than those that Keysight has tested, it could cause problems with the instrument's applications. If this happens, you should try uninstalling the program that has caused the problem, or try changing the program's configuration. If this does not correct the problem, you may have to use the Instrument Recovery system to reinstall the instrument's system software.

User Accounts

The instrument ships with a number of different accounts already set up. In addition you can create your own accounts if you desire. The privileges associated with each account determine what you can and cannot do from that account.

Administrator account

The default Administrator password that ships from the factory is "Keysight4u!".

Using the Administrator account you can perform the following operations:

- Install software
- Configure network and printer access
- Access all files on the instrument
- Add or change user accounts and passwords
- Change Firewall settings
- Change Windows settings (e.g., using Device Manager)
- Change the time and date
- Run any application

Instrument accounts

The default user account that ships from the factory is "Instrument" with the password "measure4u". This user is a member of the standard Users group. Using the Instrument account, you may perform the following operations:

- Configure network and printer access (although not local printer access)
- Access files on the instrument that are accessible to the Users group
- Run applications that are accessible to the Users group

Power Users accounts

You can assign Power User privileges to the Instrument account or to other accounts that you might create. To change privileges you must log on as the Administrator. Power Users can perform the following operations:

- Install software (with some limitations, for example, you cannot install drivers)
- Configure network and local printer access
- Access files on the instrument that are accessible to the Power Users group
- Change the time and date
- Run applications that are accessible to the Power Users group

KeysightOnly user account

The instrument contains a user account called "KeysightOnly" that can be used by Customer Support in the event that the customer has changed the Administrator password and has forgotten the password. You must not remove or modify the KeysightOnly account.

Service user accounts

There are user accounts defined in the instrument for servicing the instrument.

Customer creation of accounts

You can create additional user accounts and decide on the level of security granted to any new user accounts created. For example, the level of security can be assigned as administrator, power user, standard user, backup operators. User names are not case sensitive but passwords are case sensitive.

It is Keysight's expectation that each user's My Documents folder is mapped to the D: drive. This is to avoid overwriting the user's data in the event the Instrument Recovery must be performed. Also, this facilitates convenient backup by copying the contents of the D: drive to external media. All user accounts created by the factory already have My Documents mapped to the D: drive. It is recommended to map all new users' My Documents folders to the D: drive.

Keysight X-Series Analyzer Licensing Options

The Keysight UXA Signal Analyzer has two licensing types: Fixed Perpetual and Transportable Perpetual. These licensing types are available on all existing measurement applications except the Spectrum Analyzer Measurement Application, which requires a fixed perpetual license (shipped Standard). Fixed Perpetual licenses are also required to enable hardware options.

Fixed Perpetual

Fixed Perpetual licenses are the traditional license type (Fixed) with the same duration (Perpetual) that have been available for all features since the introduction of the X-Series analyzers. Fixed Perpetual licenses are identified by the “F” in the second character and “P” in the third character of the option designator:

Example: N9068C-2FP

A license key is instrument model and serial number dependent. You can only install the license key on the specific instrument for which it was created.

Transportable Perpetual

Transportable Perpetual licenses are an optional license type offering deployment duration which is not fixed to a specific instrument model and serial number. Transportable Perpetual licenses are identified in the product structure by a “T” in the second character and “P” in the third character of the option designator:

Example: N9068C-2TP

Transportable Perpetual licenses require a connection to the Keysight server only for managing the check-in/out of the license. The Keysight licensing server also provides for storage of unused licenses that have been transported off instruments but are awaiting assignment to new instruments. The server will limit the number of transports per 30 day period per application license to 10.

Unlike Fixed Perpetual licenses which are pre-installed at the factory with new instrument purchases, Transportable Perpetual licenses require redemption and installation of the license before the first use. This allows the user to determine on which instrument to initially install the application license.

It is recommended that instruments be at the same instrument software release to ensure the latest code is available on each instrument so that the user experience is identical between instruments. This is particularly important when transporting the license for a newly-released application, which may only be available in the latest software release.

Licensing New Measurement Application Software - After Initial Purchase

Additional measurement application software can be ordered after your initial purchase of the signal analyzer. Software upgrades are provided in a kit that includes an option based Entitlement Certificate and a license agreement. The licenses are downloaded from the license Web site onto a USB storage device so they can be loaded into the instrument.

For all software upgrades, we recommend that the latest version of the instrument software be installed. This ensures that the measurement application being licensed and activated is installed and is the most current version.

The latest revision of the software may be downloaded from:

http://www.keysight.com/find/xseries_software

A license key is usually for one instrument model and serial number combination. The license key will only install itself on that instrument.

NOTE

No calibration is required after a measurement application installation.

Installation procedure over USB

Table 3-1

Step	Action	Notes
1. Redeem the Option Upgrade Entitlement Certificate	Follow the instructions on the Certificate	After redeeming your Option Upgrade Entitlement Certificate you will receive an e-mail with an attached License File.
2. Save the license file	Save the .lic file to the root directory of a USB storage device	
3. Load the license file	Connect the USB storage device to one of the signal analyzer USB ports.	Windows will detect the new hardware and may display the configuration menu. The signal analyzer will automatically load the license file. (This may take a few minutes) Upon completion, the Keysight License Manager will display a "Successful License Installation" message.

NOTE

Alternatively the license file can be manually installed over USB or LAN by placing the license file in the following folder on the signal analyzer.
C:\Program Files\Keysight\licensing

Table 3-1

Step	Action	Notes
4. Verify installation	<ul style="list-style-type: none"><li data-bbox="516 327 971 390">– Cycle the power on the signal analyzer.<li data-bbox="516 401 971 443">– Press System, Show System.<li data-bbox="516 474 971 548">– Verify that the new application appears in the list.	<p data-bbox="979 327 1427 390">The application will not be available for use until after the power has been cycled.</p> <p data-bbox="979 401 1427 464">This displays the list of installed applications.</p> <p data-bbox="979 474 1427 548">If you require further assistance, please contact the Keysight support team.</p> <p data-bbox="979 558 1427 590">Online assistance:</p> <p data-bbox="979 590 1427 663">http://www.keysight.com/find/assist</p> <p data-bbox="979 674 1427 810">If you do not have access to the Internet, contact your local Keysight Technologies Sales and Service Office, or if in the United States, call 1-800-829-4444.</p>

Windows Configuration

The Windows settings have been optimized for the best measurement performance. Any modifications to these settings may degrade instrument performance and measurement speed. In general, most Windows System settings (typically set through the Windows Control Panel) should not be modified. Those that can be safely modified are listed below.

CAUTION

To recover from problems caused by changing Windows Systems settings, you may have to reinstall the Windows system and instrument applications using the Instrument Recovery process.

Settings that can be changed

You may change the following Windows settings or administrative tasks (available from the Windows Control Panel) to suit your own personal preferences. It is recommended that you document any changes to the instrument's configuration in case an Instrument Recovery is performed and the configuration is reset.

NOTE

Some of these actions can only be performed with Administrator privileges.

Table 3-2








You May Use This Feature:	To Do This...
 Windows Update	Configure Microsoft Windows Automatic Updates. Microsoft recommends that you always get the latest critical Windows updates to ensure that the instrument's Windows operating system is protected. If the instrument has internet access, the instrument default is set to automatically check for critical Windows Updates and notify you. You can change the configuration of the Microsoft Automatic Updates. You can choose not to have automatic updates. However, if you do this then you should manually update Windows periodically, by accessing Internet Explorer and selecting Windows Update from the Tools menu.
 Action Center	Install and configure an Anti Virus program
 User Accounts	Setup new user accounts. CAUTION Do not delete or modify the "KeysightOnly" user account. Doing so may prevent Keysight from servicing the instrument.
 Network and Sharing Center	Add the Instrument to a network

Table 3-2

You May Use This Feature:	To Do This...
 Devices and Printers	Install and configure a printer
 Date and Time	Set the time and date
 System	<p>If you click on “Advanced System Settings” a dialog will open called “System Properties.” On this dialog there is an “Advanced” tab, which opens up a dialog with a number of settings options. One of these is “Performance”, and if you click on the “Settings” button under “Performance”, you will see another dialog with a number of settings options. The default is “Let Windows choose what’s best for my computer.” You can also select “Adjust for best performance.”</p> <p>You should leave the remaining selections unchanged.</p>

Settings that must not be changed

Avoid changing the settings described below (available from the Windows Control Panel). Changes to these settings may degrade instrument performance, screen displays, and measurement speed.

Table 3-3







Do NOT Use This Feature:	To Do This...
 Power Options	Do not change Power Options.
 System	<p>If you click on “Advanced System Settings” a dialog will open called “System Properties.”</p> <p>On this dialog there is a tab called “Hardware.” You should not modify any settings under the “Hardware” tab.</p> <p>On this dialog there is also a tab called “Advanced.” You should not modify any settings under the “Advanced” tab except as described above under “Settings that can be changed”.</p>
 Fonts	Do not remove installed Fonts

Table 3-3

Do NOT Use This Feature:	To Do This...
 Display	Do not change the following Display Settings: <ul style="list-style-type: none">– Screen Saver settings (under “Personalization”)– Screen resolution (under “Adjust Resolution”)– DPI setting (under “Set custom text size”)
 Region and Language	Do not change any settings under “Region and Language” or the instrument keyboard and display may not operate properly
 User Accounts	Do not delete or modify the "KeysightOnly" user account.

In addition, Do Not:

- Add, delete, or modify disk drive partitions.
- Delete or modify Keysight registry entries.
- Change the contents of any directories containing the name "Keysight".
- Stop the IIS server
- Tamper with any virtual directories (or their contents) that came configured with the instrument.
- Uninstall these libraries, interfaces, or programs:
 - The I/O Libraries
 - The .NET Framework or any Hotfixes or Service Packs for the .NET Framework
 - The “Microsoft Visual J# .NET Redistributable Package 1.1”
 - Programs that begin with "Keysight"
 - The Adobe Acrobat reader
- Modify:
 - The I/O Library “GPIB27”, “GPIB28” interfaces shown as configured Instrument I/O in the Connection Expert or I/O Config

Autoplay/Autorun

Since the introduction of Windows XP, the term Autoplay (sometimes also called Autorun) has come to be associated with the feature which assists users in selecting appropriate actions when new media and devices are detected. The Autoplay/Autorun feature is turned off in the instrument, by default, for heightened security, unless the Administrator account is running.

If you wish to re-enable Autoplay/Autorun, you may use the Auto Play function in the Control Panel. However, be aware that if you do this you may be more subject to virus attack from portable media such as USB flash drives.

Configuring Printers

Printers are configured using the Microsoft Windows Control Panel. It is easily accessed from the Windows Start menu or from under the front panel System key. This setup process can be done using the touch screen and front-panel keys. See **“Navigating Windows Without a Mouse” on page 66**.

When setting up a new printer, you may need to load the printer driver (unless you are using a network printer that your IT department has set up to include the driver). The manufacturer of the printer supplies the driver software and process. That may require that you attach an external USB disk drive. An alternative is to connect the instrument to the LAN and download the driver from the printer manufacturer’s internet site.

Configuring LAN

Hostname

The Computer Name, or Hostname, is preconfigured from the factory. It must be a unique name such that it does not conflict with other equipment on your LAN. The preconfigured Computer Name is A-N9040B-xxxxx, where xxxxx is the last 5 digits of the instrument's serial number.


To change the Computer Name consult the Windows Help and Support Center.

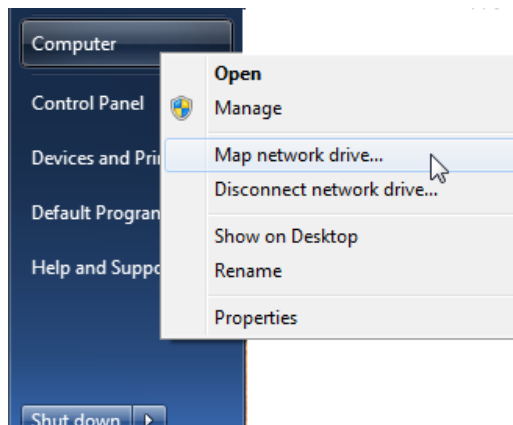
IP Address & Gateway

The instrument is preconfigured to obtain an IP Address via DHCP. You can change the IP Address and Gateway as you desire. The Windows Help and Support Center describes how to configure the LAN.

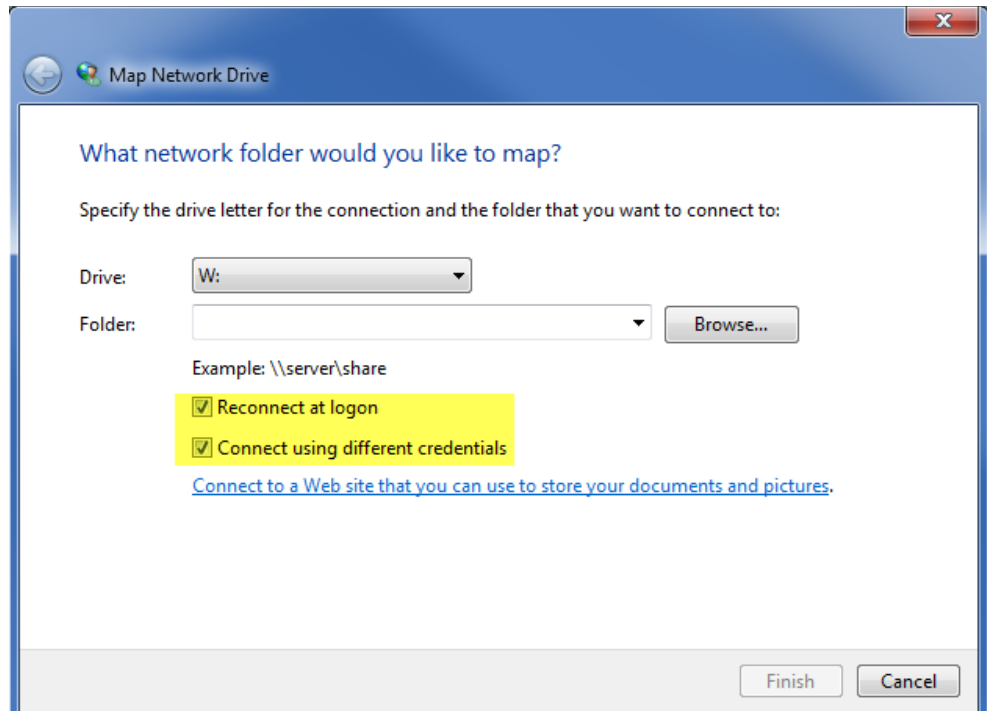
Connecting to a Network Shared Folder

The instrument contains standard Windows networking. The time required to authenticate is dependent on your LAN infrastructure. You may have improved performance by mapping a network drive to the shared folder that you need to access.

To map a network drive, click the Start icon  and right-click **Computer**.



When the Map Network Drive window appears, browse to the correct folder, select both check boxes and click **Finish**.



NOTE

In Windows 7 there is no visual indication that authentication is in progress.

Windows Security

Microsoft recommends the following to ensure the instrument's Windows operating system is protected:

- Use an internet firewall.
- Get the latest critical Windows updates.
- Use up-to-date antivirus software.

Windows Firewall



The instrument is shipped with the Windows Firewall enabled. You can verify the status of Windows Firewall by going to the Control Panel and clicking on System and Security, Windows Firewall.

Windows Firewall Exceptions for programs and ports have been added to allow proper operation of the instrument over a network. Modifying these settings may cause the instrument to not operate properly.

Automatic Updates

Microsoft recommends that you always get the latest critical Windows updates to ensure that the instrument's Windows operating system is protected. If the instrument has internet access, the instrument default is set to automatically check for critical Windows Updates and notify you.

You can change the configuration of the Microsoft Automatic Updates. You can choose not to have automatic updates. However, if you do this then you should manually update Windows periodically, by accessing Internet Explorer and selecting Windows Update from the Tools menu.

NOTE

Be aware that downloading and installing Windows Updates can be network and CPU usage intensive (impacting the instrument performance), and some Windows Updates automatically reboot the instrument. It is recommended that Windows Updates be performed when the instrument is not in normal use.

Virus Protection

There is no antivirus software included with your instrument. To find information regarding recommended antivirus software, visit the following website:

<http://www.keysight.com/find/x-series>

and select FAQs under Technical Support.

NOTE

Having antivirus software installed may have a slight impact on the instrument performance.

Spyware Protection

There is no anti-spyware software installed on the instrument. This should not be a problem if you do not use the instrument for a lot of internet browsing. Having spyware in the instrument could have an impact on the instrument performance.

System Maintenance

Backup

It is recommended that you have a regular backup strategy. Your IT department may already have a backup strategy in place which is suitable for the instrument and its data. Using the Instrument Recovery system in conjunction with a regular backup strategy should allow full recovery of the instrument data.

Windows has a Backup utility that you can use to archive files and folders in case of a disk drive failure. See the Windows Help and Support Center for more information on this utility. You can also use third party backup utilities. However, you must ensure that this third party software is compatible with the instrument's system software. See **“Customer installation of software” on page 40** for more information.

When performing backups, we recommend that you backup the data to an external storage device connected to the network or one of the instrument's USB connectors. Also, you should perform backups at times when the instrument is not being used for normal operations, as it may impact the instrument's overall performance.

System Restore

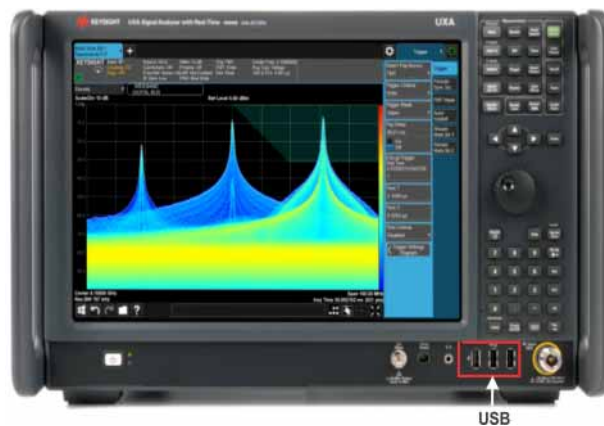
Windows contains the capability to restore the system to a previous point in time. System Restore is enabled with default settings as provided by Microsoft. However, System Restore is not always 100% successful. Therefore, it is not recommended that you rely on System Restore to protect your instrument. System Restore has not been tested to verify successful restoring.

Disk Defragmenting

The instrument has a solid state drive. Disk defragmenting is not recommended.

USB Connections

All of the USB ports are compatible with the USB 2.0/3.0 and 1.1 specification. The three USB ports on the front panel (see graphic below) and three of the USB ports on the rear panel are USB Series “A” ports. These are ports to which you can connect USB mass storage devices and printers. The instrument USB Host support includes the standard Microsoft Windows USB drivers for human interface, mass storage, printing, scanning, and imaging devices. A complete up-to-date list of the Windows USB class driver support is available on the Microsoft website.



The square USB port (see graphic below) on the rear panel is a USB 3.0 Series “B” port and is used for controlling the instrument over USB. Information to help you program your instrument is documented in the X-Series Programmer’s Guide. The instrument USB device driver included in the instrument software supports the test and measurement industry standard USBTMC-USB488 device class.



In addition, the IO Libraries CD that was included with your instrument contains USB Host drivers that allow control of other instruments connected to the USB ports.

Keysight Technologies does not support or warrant correct instrument operation if additional USB drivers from third parties are installed in the instrument. It is possible that additional drivers could break the normal USB operation. If USB operation is broken, recovery would require reinstalling the instrument application using the Instrument recovery process.

Disk Drive Partitioning and Use

The drive is partitioned into 3 sections: C:, D: and E:

- The **C: partition** contains the Windows 7 operating system and software installed by Keysight. This is an Open System which means you can install additional software, and these should be installed on the C: drive. However, only a limited set of software applications are tested for use with the Keysight measurement software. The installation and/or use of other software is not warranted and could interfere with the operation of the measurement software. If instrument repair is ever needed, the Keysight version of the C: drive is the only part of the instrument software that is restored by the Instrument Recovery process. You must reload any other software that you have added in the instrument.
- The **D: partition** is reserved for data storage. The User Accounts that are configured by Keysight have their My Documents folder mapped to the D: drive. This is for the convenience of backing-up the measurement data. You should always back-up the data on the D: drive to an external device. This allows you to restore the data if you ever need to replace the disk drive.
- The **E: partition** is reserved for Keysight's use. The primary use of the E: drive is for housing the Calibration and Alignment data. Do not change or overwrite the files on this drive. This could cause your instrument to not meet specifications, or even to stop functioning correctly. Do not use this drive for data storage. It is also recommended that you back up the contents of this drive by using the factory calibration data backup utility.

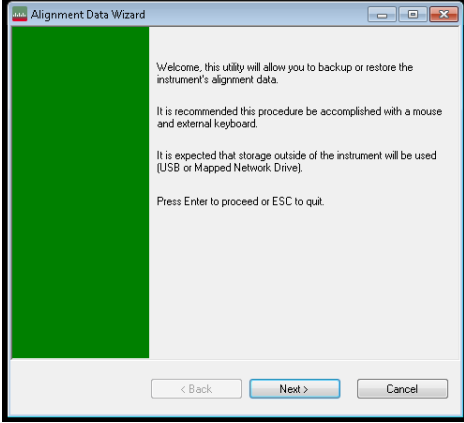
Backing-up the factory calibration data

To back-up the factory calibration data you will need a USB storage device.

Table 3-4

Step	Notes
1. Press System, Alignments, Backup/Restore Align Data...	An information window appears that informs you that the instrument must shut down to complete the backup: "Press OK to force shut down and proceed. Press Cancel to exit."

Table 3-4

Step	Notes
2. Select OK.	The Alignment Data Wizard will appear:
	
3. Follow the on screen instructions to backup the calibration data to the USB drive and save the file.	<p>NOTE The default location is an internal flash SD card, but you can choose another location.</p>

Disk Drive Recovery Process

The Instrument Recovery System can be used to repair errors on the instrument's C: drive partition or to restore the original factory configuration of the system software on the disk drive. The Instrument Recovery System is stored in a separate hidden disk drive partition.

Repairing errors on the disk drive may result in loss of data or files. If you require more information, see the "chkdsk" documentation in the Windows Help and Support Center.

Restoring the original factory system software does not restore any of the following items:

- Additional software that has been installed after the instrument was shipped from the factory. (Thus, following an Instrument Recovery any software installed after the instrument was shipped from the factory will need to be re-installed.)
- System configurations (for example user accounts, windows configurations) that have been made after the instrument was shipped from the factory. (Thus, following an Instrument Recovery configuration changes will have to be performed.)
- The Instrument Recovery overwrites the contents of the C: partition. It does not affect the D: or E: partitions.

It is recommended that the customer use a regular back up strategy. The customer's IT department may already have a backup strategy in place which is suitable for the instrument and its data. Using the Instrument Recovery System in conjunction with a regular back up strategy should allow the customer to fully recover the instrument's software and data.

Table 3-5 Recovery Process

Step	Notes
1. Make sure the instrument is turned off.	

Table 3-5 Recovery Process

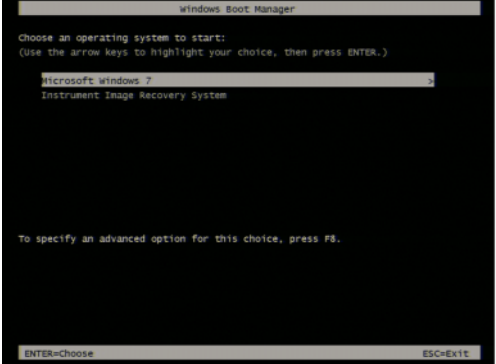
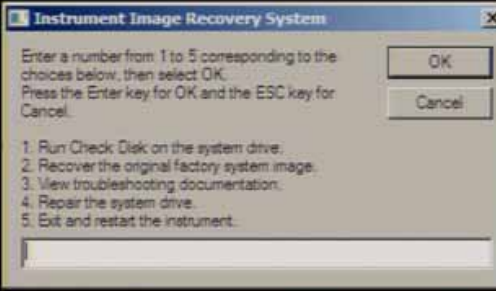
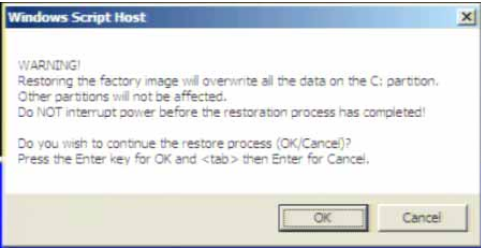
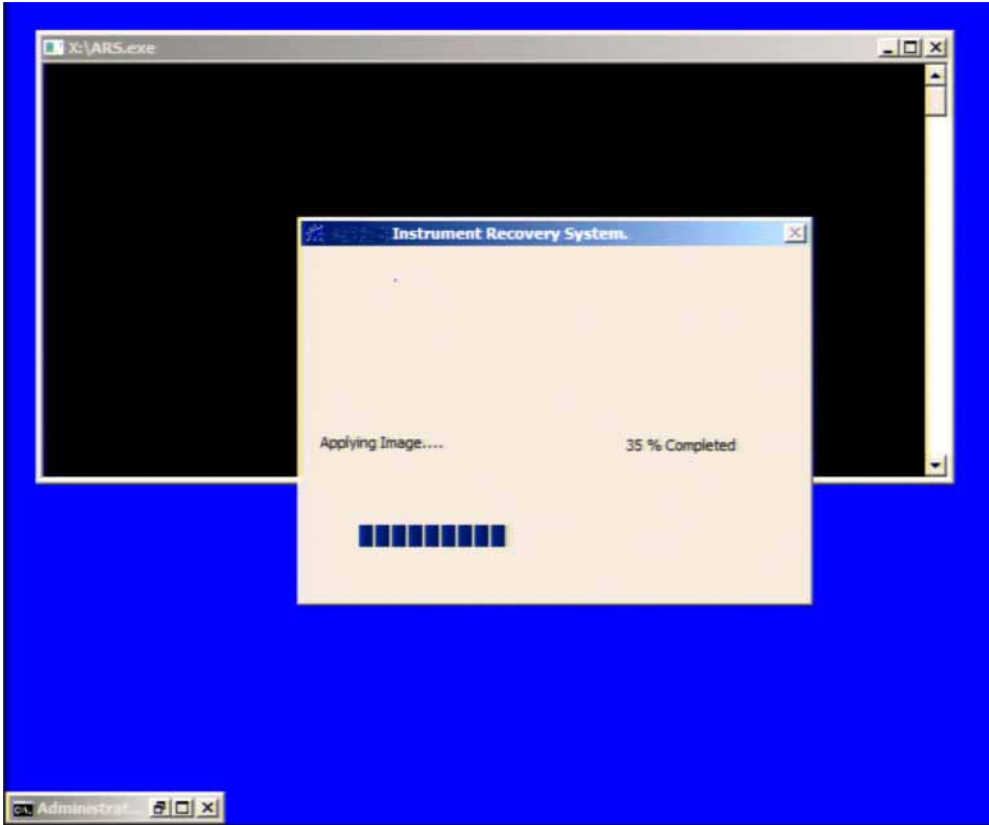
Step	Notes
<p>2. Turn on the instrument.</p> <ul style="list-style-type: none">– Press the down arrow key to move the highlight to Instrument Recovery System, then press Enter.	<p>After the Keysight Technologies screen is displayed, This screen is displayed for five seconds.</p>  <p>The screenshot shows the Windows Boot Manager interface. At the top, it says 'Windows Boot Manager'. Below that, it prompts the user to 'Choose an operating system to start: (Use the arrow keys to highlight your choice, then press ENTER.)'. Two options are listed: 'Microsoft Windows 7' and 'Instrument Image Recovery System'. The 'Instrument Image Recovery System' option is highlighted. At the bottom, it says 'To specify an advanced option for this choice, press F8.' and 'ENTER=Choose ESC=Exit'.</p>
<p>3. When the Instrument Recovery System has booted, follow the on-screen instructions to recover the image of the C: drive.</p> <ul style="list-style-type: none">– Press 2, then press Enter to select the recovery.	 <p>The screenshot shows a dialog box titled 'Instrument Image Recovery System'. It contains the following text: 'Enter a number from 1 to 5 corresponding to the choices below, then select OK. Press the Enter key for OK and the ESC key for Cancel.' Below this text is a list of five options: 1. Run Check Disk on the system drive, 2. Recover the original factory system image, 3. View troubleshooting documentation, 4. Repair the system drive, 5. Exit and restart the instrument. There are 'OK' and 'Cancel' buttons on the right side of the dialog box.</p>
<p>4. A warning message appears.</p> <ul style="list-style-type: none">– Press Enter to start the recovery, which may take up to 25 minutes to complete.	 <p>The screenshot shows a 'Windows Script Host' dialog box with a warning message. The text reads: 'WARNING! Restoring the factory image will overwrite all the data on the C: partition. Other partitions will not be affected. Do NOT interrupt power before the restoration process has completed! Do you wish to continue the restore process (OK/Cancel)? Press the Enter key for OK and <tab> then Enter for Cancel.' There are 'OK' and 'Cancel' buttons at the bottom of the dialog box.</p>

Table 3-5 Recovery Process

Step	Notes
	

5. Press **Enter** to exit and reboot the instrument once this portion of the recovery has completed.

NOTE

Additional recovery steps may be required to fully recover the system to a more current working state. This could involve restoring your own backups of the instrument information or re-installing applications, data and performing system customizations.

Updating the software

Choose one of these two processes:

- To install the latest software version, the software and installation instructions are available at:
http://www.keysight.com/find/xseries_software
- To re-install the software version you recovered to, follow the process below.

The following steps load a copy of the instrument software that forces the program code resident in the instrument's various programmable gate arrays to be in sync with the restored system software.

Table 3-6 Installing the Software

Step	Notes
1. Log out of the default user (instrument): – Select Start , select Log Off from the Shut down drop-down menu.	
2. At the log in prompt enter: – User Name: administrator – Password: Keysight4u!	
3. Navigate to C Drive: – Click Start, My Computer, C: Drive and open the Temp folder.	
4. Locate the software installer program: “XSA_Installer_A.XX.XX.exe”	
5. Double-click on the installer.exe.	It may take a minute or two for the installer to start.
6. A window appears showing the extraction process.	Following the extraction screen, there may be a short period where there is no activity on the screen. The desk top may be displayed for a short period.
7. Follow the on-screen prompts to continue the installation.	
WARNING	When you see the message <code>Programming FPGAs...</code> Do NOT turn off power to the instrument, be sure to do as it says and DO NOT turn off the instrument power at this time for ANY reason. If this process is interrupted the instrument most likely will need to be sent back to an Keysight Service Center for servicing before it will be usable again.


Table 3-6 Installing the Software

Step	Notes
------	-------

Updating Digital IF (0014.01) FPGA from version 03.05.05.02 to 03.05.05.03

Do not turn off power or interrupt this process!
不要关闭电源或中断此过程!
電源を切ったり、更新プロセスを中断したりしないで下さい。
전원을 끄거나 진행되는 작업을 중단 시키지 마세요!
Ne pas interrompre ni couper l'alimentation électrique!
Nicht ausschalten oder abbrechen!
Не выключать и не прерывать процесс!

FPGA code updates may require a significant period of time. Interrupting the FPGA update process may result in corrupt FPGA code which would require returning this instrument to Agilent for service.



NOTE The installation process can take up to 45 minutes. **Do not** turn the instrument power off or serious damage may occur. If any pop up windows appear, click **OK** or **Ignore** to proceed.

8. When the installation has finished, select **Yes, I want to restart my computer now, Finish**.
9. After the instrument restarts, the newly installed version of the X-Series instrument software will run.

It is possible a newer version of the instrument software is available on the web at http://www.keysight.com/find/xseries_software.

NOTE Additional recovery steps may be required to fully recover the system to a more current working state. This could involve restoring your own backups of the instrument configuration, including re-installing applications, data, and performing system customizations.

Instrument Operating System
Disk Drive Recovery Process

4 Using Windows Tools

NOTE

The capabilities described in this section are Microsoft Windows 7 features. The discussion provided here gives some guidelines for using the capabilities with the instrument. You need to refer to the Windows 7 help documentation for more information. Your version of Windows may not match these instructions exactly.

You need an external keyboard and mouse to fully use these features.

[“Navigating Windows Without a Mouse” on page 66](#)

[“Remote Desktop: Using the X-Series Signal Analyzers Remotely” on page 67](#)

[“Embedded Web Server: Using the X-Series Signal Analyzers Remotely” on page 76](#)

[“Windows Shortcuts and Miscellaneous Tasks” on page 85](#)

Navigating Windows Without a Mouse

Table 4-1

Key Presses	Actions
Esc	Exits/closes a Windows dialog box (does not exit an Application window)
Enter	Does the current "default action". If a menu item or a button is currently highlighted, then the Enter key activates that menu item or button.
Alt	Moves focus/control to the pull down menus bar in the active Window
Right Arrow	In pull-down menu: opens the next menu to the right, or opens a submenu In a dialog box: selects an option button
Left Arrow	In pull-down menu: opens the next menu to the left, or opens a submenu In dialog box: selects an option button
Up Arrow	In pull-down menu: Moves to next selection up in the menu In dialog box: selects an option button
Down Arrow	In pull-down menu: Moves to next selection down in the menu In dialog box: selects an option button
Tab	In dialog box: moves to the next/previous field
Del	Deletes the currently selected item
Alt + Tab	Switches between the next/previous Application
Alt + Enter	Shows the Properties of the currently selected item
Alt + Esc	Cycles through items in the order that they had been opened
Backspace	In My Computer or Windows Explorer: move up one level In Internet Explorer: works like the BACK arrow key
Ctrl + Left arrow	Moves to the left one word at a time
Ctrl + Right arrow	Moves to the right one word at a time
Ctrl + Tab	In dialog box: moves to the next/previous Tab location
Ctrl + Esc	Opens the Windows Start Menu
Ctrl + Alt + Delete	Opens a window that enables you to select the Windows Task Manager

Remote Desktop: Using the X-Series Signal Analyzers Remotely

Windows Remote Desktop is recommended for remote control of the instrument. It offers fully-interactive control that is almost identical to direct face-to-face control of the instrument. You can also remotely control the instrument using the Embedded Web Server interface. The Embedded Web Server functionality provides a communications method that does not require login to the instrument. However, due to its slower response time, it is only recommended for setup and data exchanges that do not involve instrument control.

NOTE

The Remote Desktop functionality is a Microsoft Windows 7 capability. The following discussion provides some guidelines for using this capability with the instrument. You need to refer to the Windows 7 help documentation for more information. As Windows evolves, these instructions may no longer be exact.

You need an external keyboard and mouse to fully use this functionality.

Overview of Remote Desktop operation

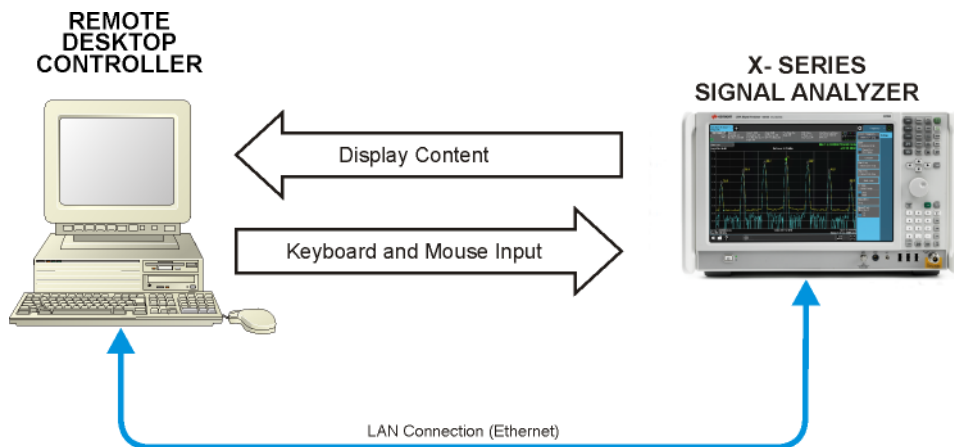
Using the Remote Desktop functionality of the instrument allows you to control and interact with the instrument from a remote computer as though you were sitting in front of the instrument.

When you have configured the instrument for remote connectivity, and configured a separate computer to act as a Remote Desktop Host, you can send commands to the instrument from the remote computer, and you can see the instrument display on the screen of the remote computer.

This section provides full details of how to set up the instrument for remote connectivity, and also how to set up a computer running any version of Microsoft Windows as a Remote Desktop Host.

Setting up Remote Desktop operation

Figure 4-1 Basic setup for remote desktop operation



NOTE

To perform this operation successfully, you must have Administrator level access to the instrument.

Table 4-2 Setting up a remote desktop connection

Step	Action
1. On the instrument, open the Windows Control Panel	– From the instrument application, press System, Control Panel ,
2. Select System functions	– From the Adjust your computers settings menu, click System .
3. Access Remote setting	– In the Control Panel Home window, select Remote settings
4. Select the Remote option	– On the Remote tab, in the Remote Desktop section, click the appropriate checkbox.
5. To add users	– Click Select Users, Add .
6. Follow the on screen instructions.	

Setting up the remote computer

The procedure depends on whether the Remote Computer to be set up is running Windows 7, or another version of Microsoft Windows.

Remote computer running Windows 7

Windows 7 includes the Remote Desktop Connectivity Client software, so no additional setup is required.

Remote computer running another version of Windows

You can use any version of Windows to install and run the Client software for Remote Desktop Connectivity. However, you need to have available a Windows installation CD-ROM, because that contains the Client software.

NOTE

The following instructions relate to software provided by Microsoft Corporation. Keysight offers no warranty regarding the operation of such software. The procedure described here may be changed by Microsoft at some future time.

Table 4-3 Installing the Client software

Step	Notes
1. When the Welcome Screen appears, click Perform additional tasks	
2. From the What do you want to do? screen, click Set up Remote Desktop Connection .	The Remote Desktop Connection InstallShield Wizard appears.
3. Click Next .	Follow the on screen instructions provided by the Wizard.
4. To access the installed software, click Start > All Programs > Accessories > Communications > Remote Desktop Connection .	

How to locate the computer name of the instrument

To connect a remote computer to the instrument, you need to know its Computer Name. The Computer Name can be displayed as follows:

Table 4-4 Locating the name from the Keysight application

Step	Notes
On the instrument front panel, press System, Show, System .	A page listing various parameters appears. The instrument's computer name is shown in the list next to the title Computer Name.

Table 4-5 Locating the name from the Windows desktop (with a mouse):

Step	Notes
1. Click Start, Control Panel .	

Table 4-5 Locating the name from the Windows desktop (with a mouse):

Step	Notes
2. Double-click System	The Computer name is listed in the Computer name, domain, and workgroup settings section.

Running a Remote Desktop session

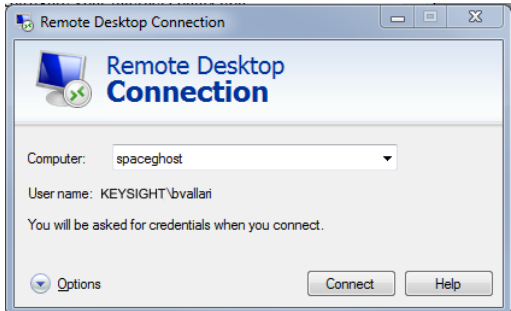
Initializing a Remote Desktop session

NOTE

To initialize a Remote Desktop Session, you need to know the Computer Name of the instrument.

After setting up the remote computer for Remote Desktop Connectivity, as described in **“Setting up Remote Desktop operation” on page 68**, you are ready to start a Remote Desktop session.

Table 4-6 Starting a session

Step	Notes
1. Click Start > All Programs > Accessories > Communications > Remote Desktop Connection.	A Remote Desktop Connection dialog appears:
	
2. Enter the computer name of the instrument.	
3. Click Connect.	A login dialog box appears.
4. Enter the login account name and password.	The default account name is Instrument and the default password is measure4u , but these parameters may be changed by instrument users.

NOTE

Only the current User or an Administrator can remotely log into the instrument. To see who the current user of the instrument is, press **Ctrl+Esc** on the instrument until you can view the current user name on the Start menu. If no one is currently logged into the instrument, any valid instrument user can remotely log in.

The instrument display appears on the screen of the remote computer. Because the instrument front-panel keys are not available when using the instrument remotely, three alternative methods are available to perform the functions of the front-panel keys.

Windows Remote Desktop Options

Table 4-7 Setting Remote Desktop options

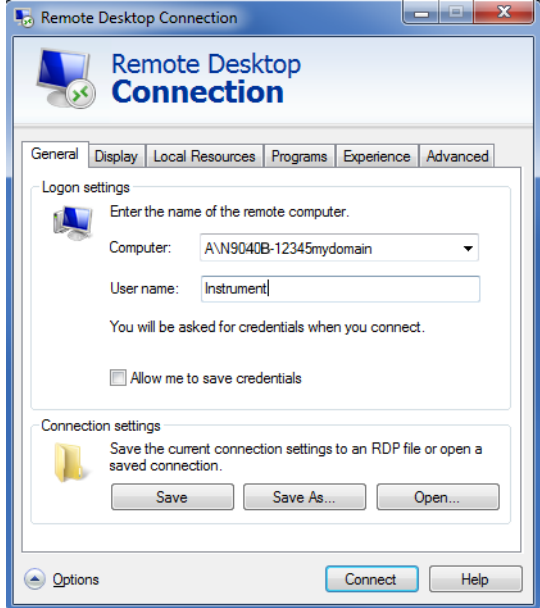
Step	Notes
1. On the Remote Desktop Connection menu, click Options .	 The screenshot shows the 'Remote Desktop Connection' dialog box with the 'Options' tab selected. The 'General' sub-tab is active. Under 'Logon settings', the 'Computer' dropdown is set to 'A\N9040B-12345mydomain' and the 'User name' field contains 'Instrument'. There is a checkbox for 'Allow me to save credentials' which is currently unchecked. Under 'Connection settings', there are buttons for 'Save', 'Save As...', and 'Open...'. At the bottom, there are 'Options', 'Connect', and 'Help' buttons.
2. Under the General tab, ensure that the Computer name , User name and Domain name are set correctly.	The Options dialog has several tabs. Generally, the default settings are correct. You may choose to enter the password and save it for future sessions, by checking the Save my password box.

Table 4-7 Setting Remote Desktop options

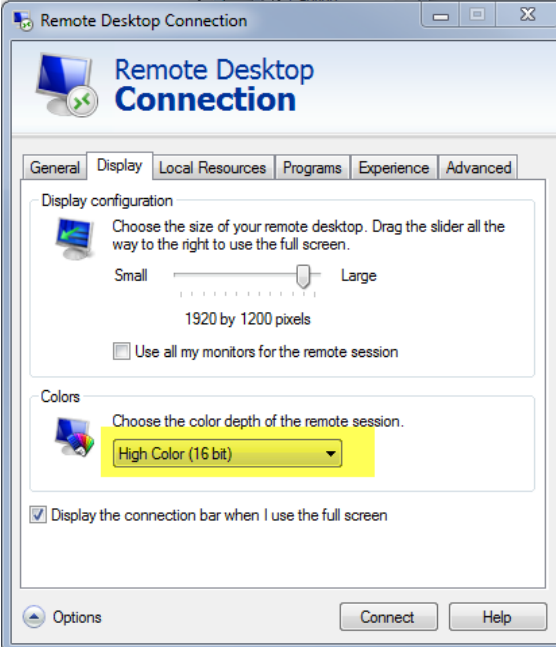
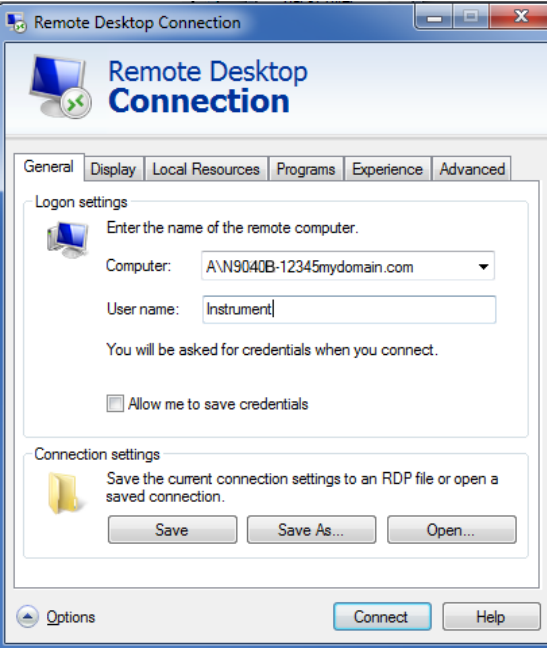
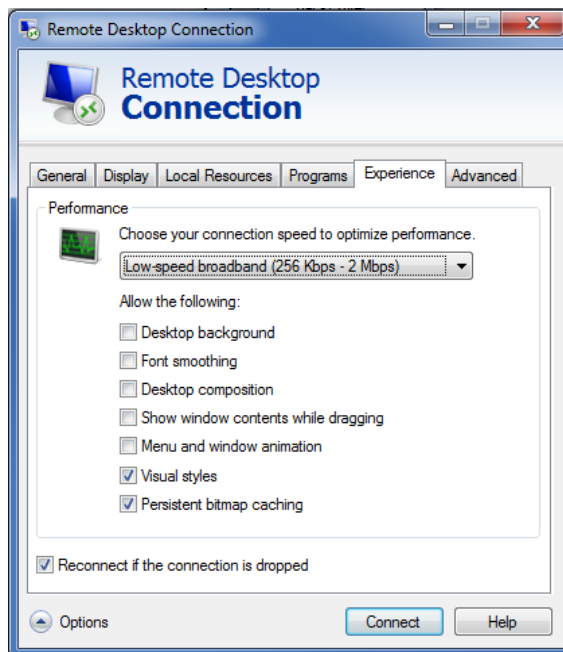
Step	Notes
3. Click the Display tab.	
– Under Remote desktop size , you may select the size of the window in which the instrument display appears. Do not select any size smaller than the instrument's front panel display. Selecting a remote desktop size smaller than the instrument's front panel display results in some of the items on the instrument display not being fully visible. In such circumstances, scroll bars do not appear, so portions of the display are not accessible.	
– Under Colors , set this to 16 bits. If you operate Remote Desktop with greater color depth (e.g., 32-bit) your windows may have a different appearance than they do on the instrument display because transparency becomes enabled.	

Table 4-7 Setting Remote Desktop options

Step	Notes
4. Click the Local Resources tab.	
<ul style="list-style-type: none">- Selecting the Disk Drives checkbox enables you to transfer data between the remote desktop and the local PC.- To transfer data, click Start on the task bar of the remote computer, then click My Computer. Explorer opens on the remote computer and displays the drives of both the remote computer and the local computer. You can now copy and paste between the two disk drives.	

5. Click the **Experience** tab. To Optimize the performance of the Remote Desktop session, choose the appropriate connection format from the drop-down list.



Ending a Remote Desktop session

There are two ways to disconnect the remote computer from the instrument, ending the session:

Table 4-8

Step	Notes
1. Click the X , then click OK .	For full-screen, the X appears at the top center of the window. For non full-screen, the X appears in a red box at the right of the window's title bar.
or	
2. When the remote desktop is full screen, move the cursor to the bottom left of the window: <ul style="list-style-type: none"><li data-bbox="472 852 808 884">– Click Start, Disconnect.<li data-bbox="472 898 727 930">– Click Disconnect.	You are asked to confirm that you want to disconnect.

Embedded Web Server: Using the X-Series Signal Analyzers Remotely

The instrument can be controlled using either the Embedded Web Server or Windows Remote Desktop. The Embedded Web Server is a good solution when you do not want to log into the instrument's user account. This allows you to view the display or control the instrument, without logging the current user off. Multiple users can connect at the same time.

The web server in the UXA updates many times per second and it has the advantage over Remote Desktop that it does not lock out the front panel.

NOTE

Drag gestures do not work in web control, whereas they do in Remote Desktop.

Browsers that support UXA Embedded Web Server (these versions or later)

IE	Chrome	Safari	FireFox	iOS Safari	Chrome for Android
11	35	8	34	8	39

Accessing the instrument through the Internet

It is possible to access and control the instrument through the Internet and World Wide Web, or a local internet, using the built-in Embedded Server functionality. This section provides details of how to use this functionality.

The instrument may also be accessed and controlled using the Windows Remote Desktop functionality (see the section **“Remote Desktop: Using the X-Series Signal Analyzers Remotely” on page 67**, for details).

The instrument Embedded Server capabilities are fully compliant with the LXI (LAN eXtensions for Instrumentation) standard.

NOTE

To gain access to the instrument from the LAN, you need to know its hostname (or IP Address). For details of how to locate this information using the instrument Display, see **“How to locate the computer name of the instrument” on page 69**.

Table 4-9 Accessing the instrument

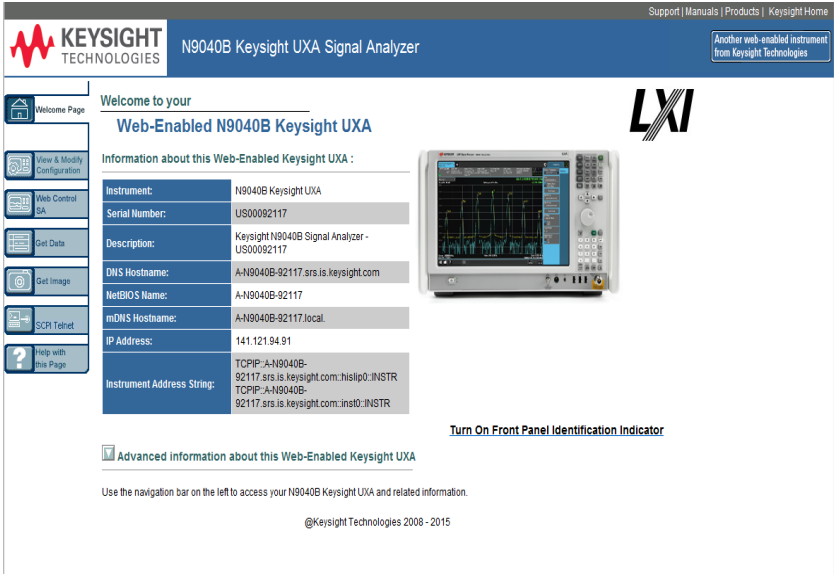
Step	Notes
<p>1. Enter a URL corresponding to the instrument hostname or IP Address.</p>	<div style="background-color: #cccccc; padding: 5px; display: inline-block; font-weight: bold; margin-bottom: 5px;">NOTE</div> <p>This functionality is only fully supported when using Internet Explorer.</p> <p>In this example, the host name is “a-n9040b-00104”.</p>
<p>2. Click Advanced information about this Web-Enabled Keysight MXA</p>	<p>When the connection is made, the welcome page appears.</p> 

Table 4-9 Accessing the instrument

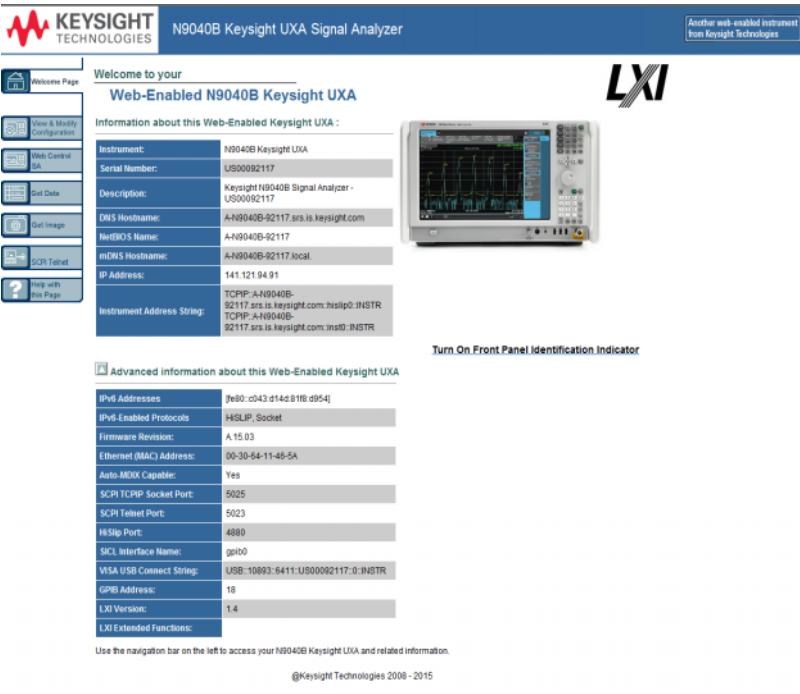
Step	Notes
	<p>At the left side of the page are a set of tabs that provide access to configuration information for the instrument, plus the ability to control it through the web interface.</p>

Table 4-10 Selecting the View & Modify Configuration tab

Step	Notes
<p>1. Click View & Modify Configuration</p>	<p>This displays a web page, which shows the instrument's currently-assigned IP address and other TCP/IP parameters.</p>

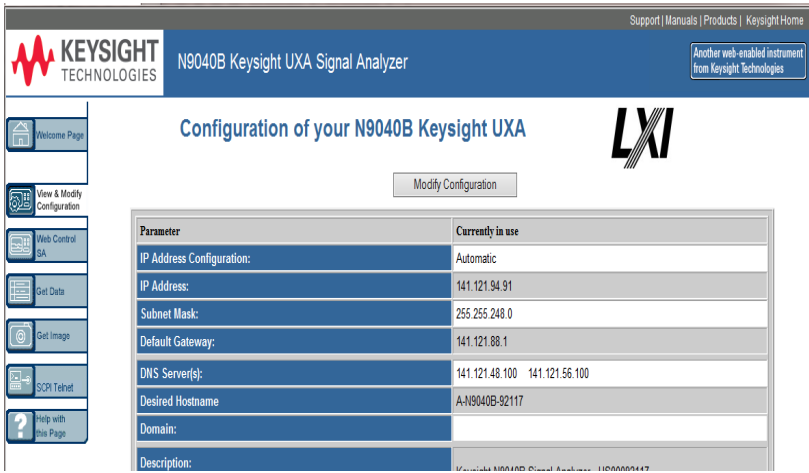
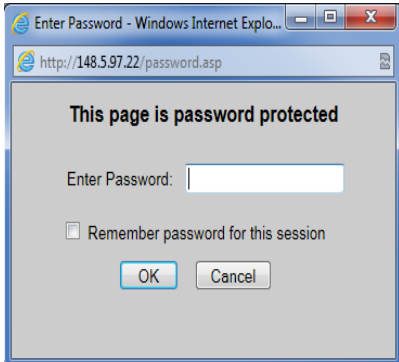
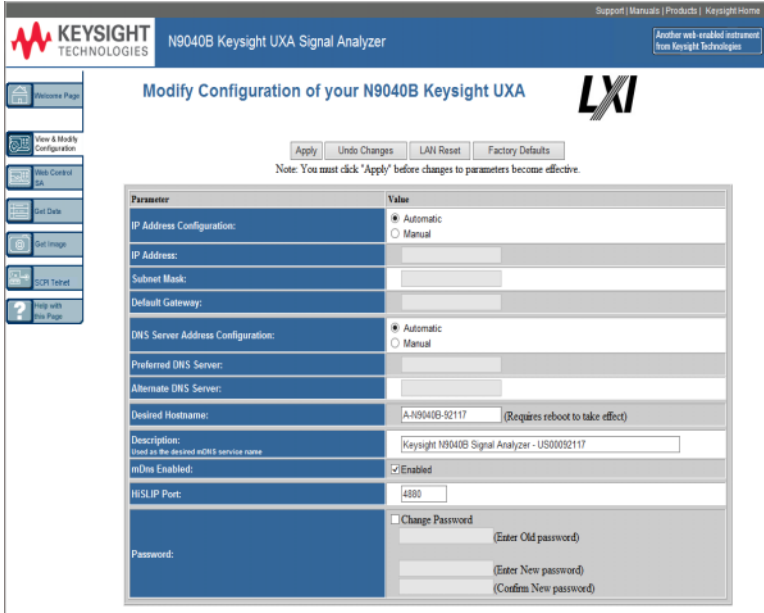


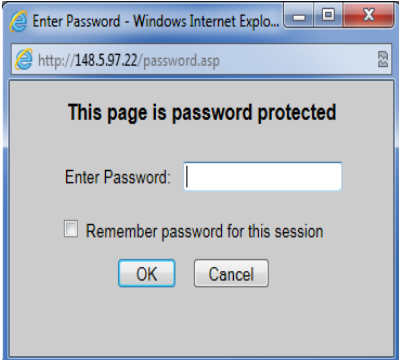
Table 4-10 Selecting the View & Modify Configuration tab

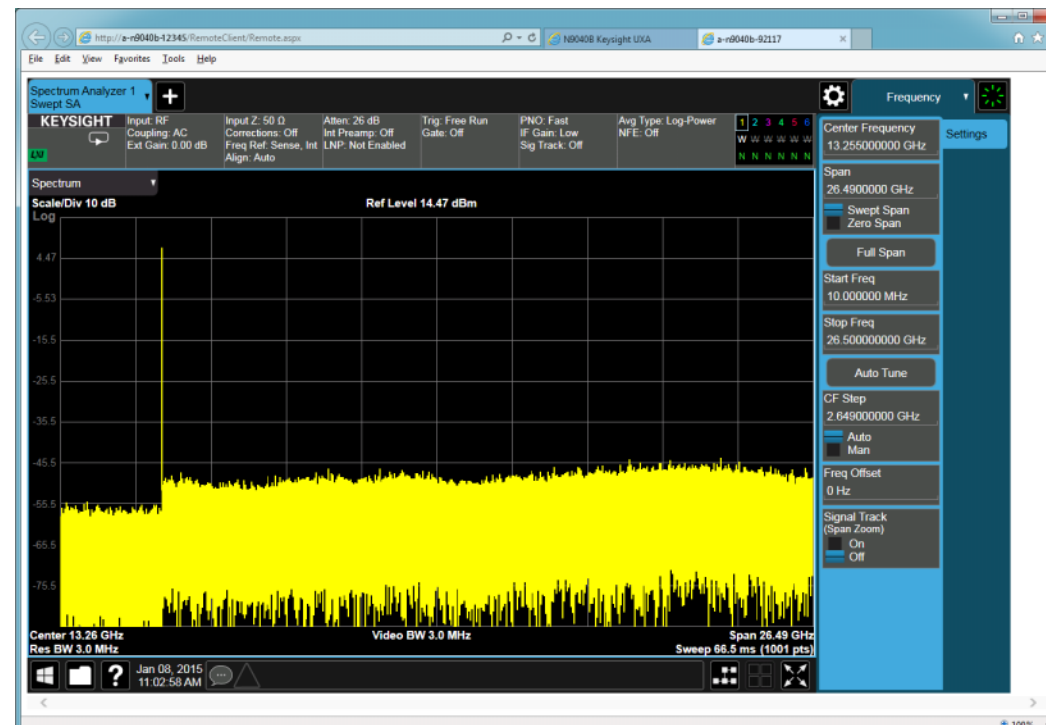
Step	Notes
<p>2. Click Modify Configuration</p> 	<p>A password entry dialog appears.</p> <p>By default, this password is set at the factory as “measure4u”. However, you may subsequently change the password. (Press System, I/O Config, Reset Web Password on the instrument front panel to change the password.)</p> <p>When the correct password has been entered, the Modify Configuration web page appears.</p>
<p>3. Enter new settings as required, then click Apply to cause the new settings to take effect.</p>	
	<p>Before clicking Apply, you may use the Undo Changes button to revert all settings to their previous values.</p>

Accessing the Web Control SA tab

Selecting this tab lets you view, control and interact with the instrument through the web server.

Table 4-11

Step	Notes
1. Click Web Control SA	A password entry dialog appears.
	<p>By default, this password is set at the factory as “measure4u”. However, you may subsequently change the password. (Press System, I/O Config, Reset Web Password on the instrument front panel to change the password.)</p> <p>When the correct password is entered, the instrument control web page appears.</p> <p>NOTE To view the instrument display, the instrument application must be running.</p>



Selecting the Get Data tab

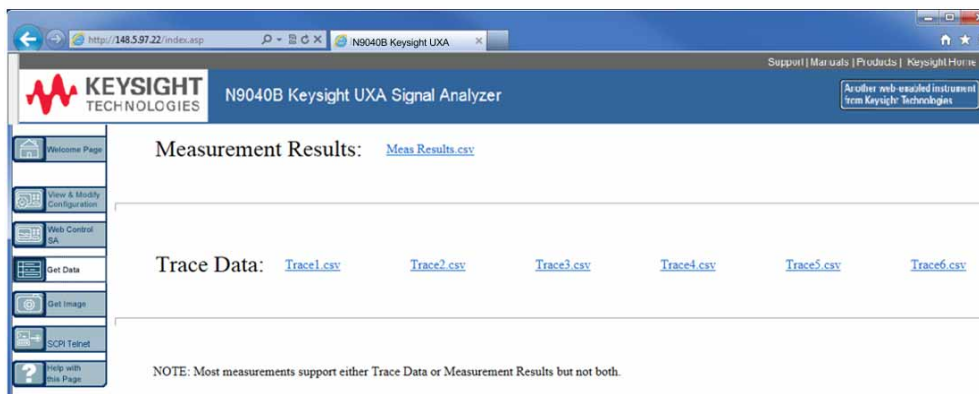
Selecting the Get Data tab allows you to capture results from the instrument's currently active measurement. Depending on the current measurement type, captured results consist of either Trace Data or Measurement Results.

NOTE

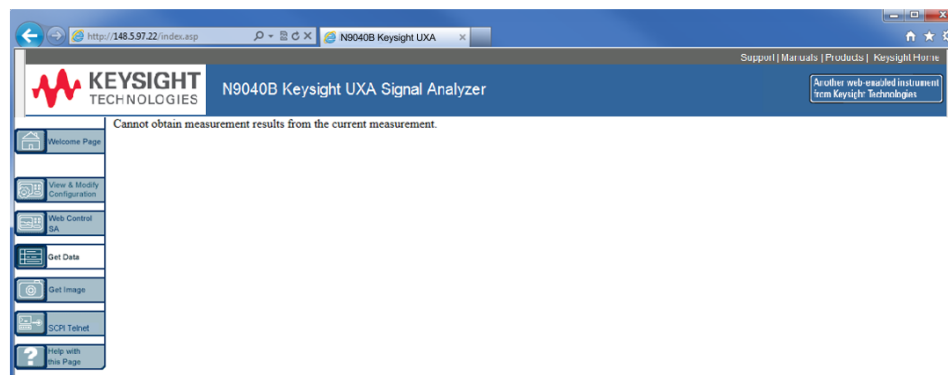
To capture data using the web server, the instrument application must be running.

The captured data is formatted as a Comma Separated Value (CSV) file, which may be saved on the client computer's disk drive, or opened with a spreadsheet application such as Microsoft Excel, or imported into a database application such as Microsoft Access.

A typical Get Data web page display is shown below:



If the measurement currently running does not support the selected result type, the web page indicates this:



Selecting the Get Image tab

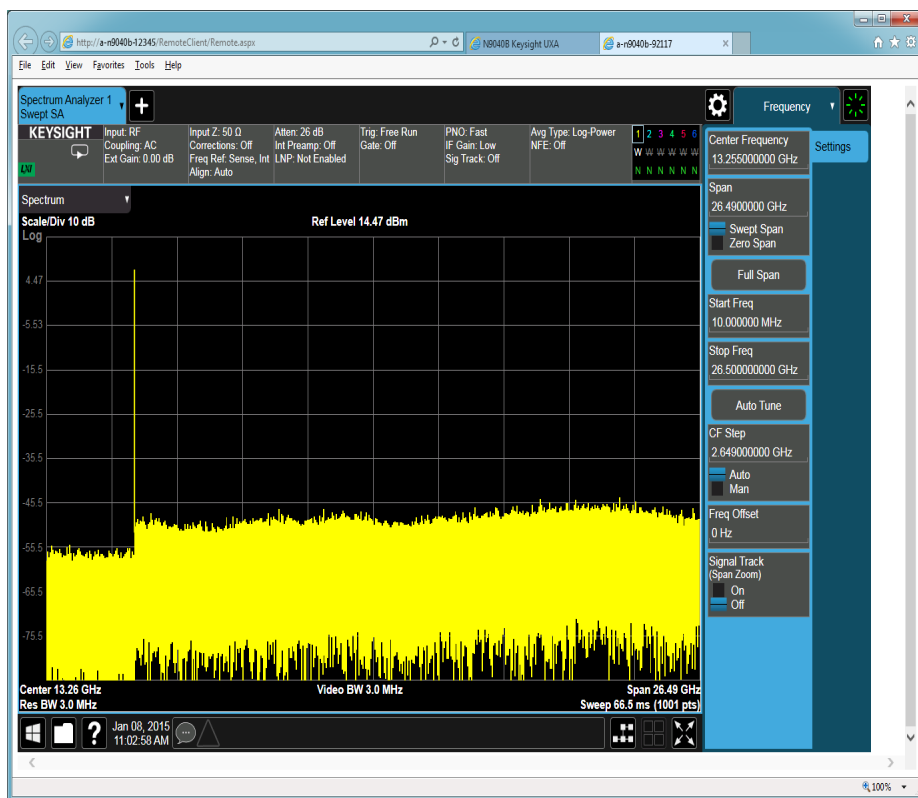
Selecting the Get Image tab captures a screen image from the Instrument display.

NOTE

To capture a screen image using the web server, the Instrument Application must be running.

The image is captured as a Portable Network Graphics (PNG) file, to the default file name `Screen.png`. The image file can be saved to the client computer disk drive, or copied to the Windows clipboard.

A typical screen capture image appears as follows:



Selecting the SCPI Telnet tab

Selecting the SCPI Telnet tab opens a Telnet session between the instrument and the client computer. The instrument TCP/IP port used for SCPI access is 5023.

NOTE

To run a SCPI Telnet session, the instrument application must be running.

Table 4-12

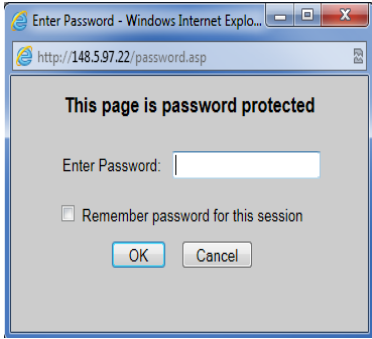
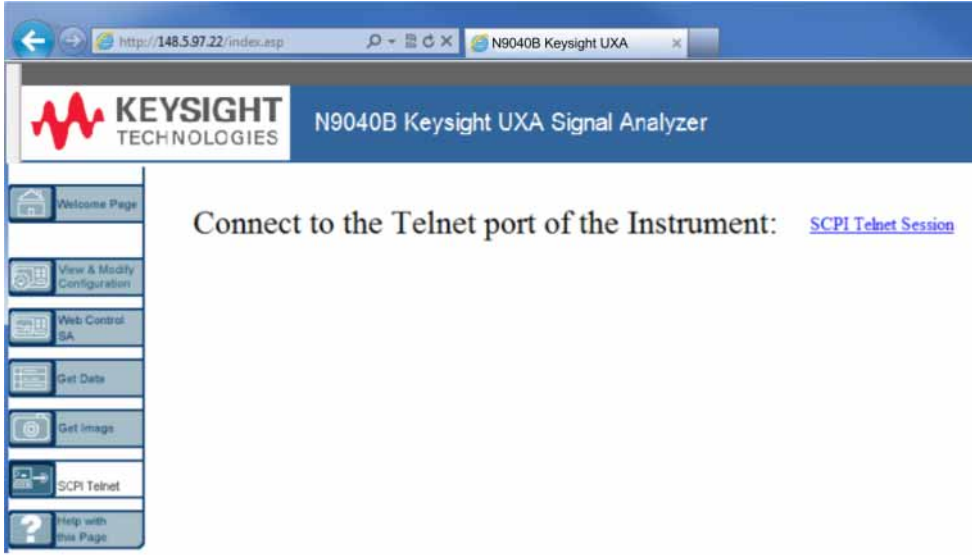
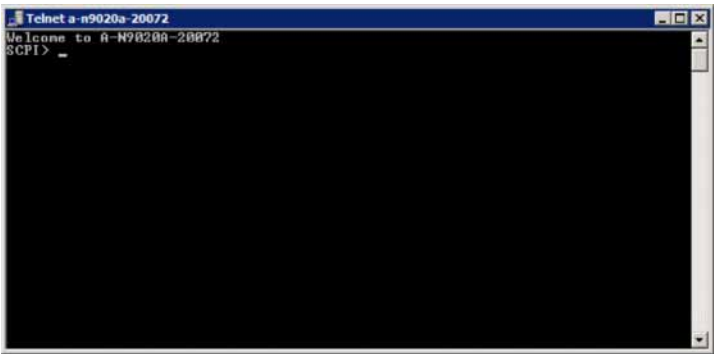
Step	Notes
1. Click SCPI Telnet	<p>A password entry dialog appears.</p> <p>By default, this password is set at the factory as “measure4u”. However, you may subsequently change the password. (Press System, I/O Config, Reset Web Password on the instrument front panel to change the password.)</p> <p>When the correct password is entered, the connection window appears.</p>
	
	
2. Click SCPI Telnet Session	<p>The telnet command line interface appears.</p>

Table 4-12

Step	Notes
	SCPI commands and queries may be entered using the command line interface.

3. To exit the telnet session, press **Ctrl+]** on the client computer keyboard.

Selecting the Help tab

Selecting the Help tab displays basic help information about each of the other tabs, plus performance tips, as shown:



Windows Shortcuts and Miscellaneous Tasks

This section provides a list of windows shortcuts (key combinations) that are useful when you operate the instrument without an attached mouse and keyboard. (See also **“Navigating Windows Without a Mouse” on page 66.**) Although these shortcuts are available in any Windows 7 system, they are not commonly used when a mouse and keyboard are attached.

Windows shortcuts (key combinations)

You can use the following combinations of front panel keys to perform basic windows tasks when using the instrument without an attached mouse and keyboard.

Table 4-13 Windows shortcut key combinations

To do the following:	Press:
Display the Windows Start Menu	Ctrl+Esc
Cycle through all open applications	Alt+Tab
Select the first menu of a menu bar	Alt
Move through menu headings	Left Arrow, Right Arrow
Open (drop down) a menu	Down Arrow
Move through items in an expanded menu	Up Arrow, Down Arrow
Close the current menu selection	Esc
Cancel the current menu bar selection	Alt
Open an application's control menu (usually the left-most menu on the menu bar, starting with F ile)	Alt+Down Arrow
In a dialog: move between tabs	Ctrl+Tab
In a dialog: move forward through dialog box items	Tab
In a dialog: move backward through dialog box items	Shift+Tab
In a dialog: open a list box	Alt+Down Arrow
In a dialog list box or check box: select or deselect one item at a time	Shift+Up Arrow, Shift+Down Arrow
In My Computer , expand a selected folder	Enter
In My Computer , open a folder one level up from the current folder	Bk Sp

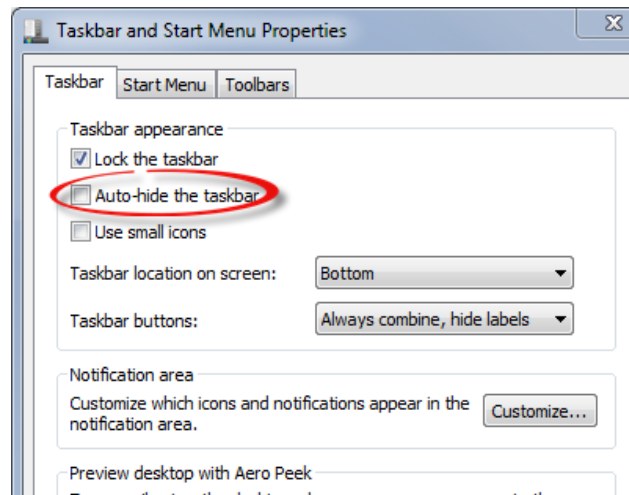
Windows taskbar auto-hide feature

The Windows taskbar should always be in the auto-hide mode when using the instrument application. If the taskbar is not set to auto-hide, the lower part of the instrument display is obscured by the taskbar.

If at any time the Windows taskbar is inadvertently set to the non-auto-hide mode, you can restore the auto-hide behavior by doing the following:

Table 4-14 Restoring taskbar auto-hide mode

Step	Notes
1. Click Start, Control Panel	If not using a mouse, press Ctrl+Esc .
2. Click Taskbar and Start Menu	If you are not using a mouse, use the shortcut key combinations specified in the Section “Windows shortcuts (key combinations)” on page 85 to make these selections.
3. Click the Taskbar tab	The Taskbar and Start Menu Properties dialog appears.
4. Select the Auto-hide the taskbar check box	If you are not using a mouse, press Tab repeatedly until the auto-hide option is selected, then press Select to toggle the check box state.



5. Click OK .	This applies the change and closes the dialog box.
----------------------	--

5 Troubleshooting

[“Check the Basics” on page 88](#)

[“Problems with Microsoft Windows 7” on page 90](#)

[“Returning an Analyzer for Service” on page 91](#)

WARNING

No operator serviceable parts inside. Refer servicing to qualified personnel. To prevent electrical shock do not remove covers.

Check the Basics

- Is there power at the receptacle?
- Is the analyzer turned on? Check to see if the green LED beside the power switch is on. Also, listen for internal fan noise to determine if the analyzer cooling fans are running.
- If other equipment, cables, and connectors are being used with your signal analyzer, make sure they are connected properly and operating correctly.

If the analyzer cannot completely load or run the operating system, or the instrument application is not successfully launched, the problem could be a corrupt disk drive. If the analyzer gets far enough along in the boot process to run the "Instrument Recovery System", perform the **"Disk Drive Recovery Process"** as described on page 60.

- Is the Measurement Application running? If not, there is a software launch shortcut/icon on the desktop.
- Does the instrument application have the focus? If not, move focus to the application with Alt-Tab.
- Review the measurement procedures being performed when the problem first appeared. Are all of the settings correct?
- If the analyzer is not functioning as expected, return the analyzer to a known state by pressing **Mode Preset**.

NOTE

Some analyzer settings are not affected by a Preset. If you wish to reset the analyzer settings, press **System, Power On, Restore Power On Defaults**.

- Is the measurement being performed, and the results that are expected, within the specifications and capabilities of the analyzer?

Refer to the specifications guide for your analyzer.

<http://literature.cdn.keysight.com/litweb/pdf/N9040-90002.pdf>

<http://literature.cdn.keysight.com/litweb/pdf/N9030-90089.pdf>

<http://literature.cdn.keysight.com/litweb/pdf/N9020-90276.pdf>

<http://literature.cdn.keysight.com/litweb/pdf/N9010-90071.pdf>

<http://literature.cdn.keysight.com/litweb/pdf/N9000-90035.pdf>

Technical manual pdf files are available on the documentation DVD provided with the instrument, and on the Keysight website:

http://www.keysight.com/find/uxa_manuals

http://www.keysight.com/find/pxa_manuals

http://www.keysight.com/find/mxa_manuals

http://www.keysight.com/find/mxa_manuals

http://www.keysight.com/find/cxa_manuals

- If the analyzer is not communicating via the LAN connection, check for the presence of blinking yellow LEDs on the rear panel LAN connector. If the ACT LED is not blinking, check the LAN cable and LAN integrity.
- To meet specifications, the analyzer must be aligned. Either the Auto Align (On) feature must be selected (press **System, Alignments, Auto Align**, and select **Normal**), or the analyzer must be manually aligned.
- Perform an Alignment. Press **System, Alignments, Align Now, Align All Now**.
- If the previously performed alignments did not resolve the problem, press **System, Alignments, Restore Align Defaults**. Then press **System, Alignments, Align Now, Align Now All**.
- If the analyzer exhibits large amplitude errors (> 10 dB) especially at frequencies above 10 GHz, the RF preselector might not be properly centered. Press **AMPTD, Signal Path, Presel Center**. If the signal amplitude error is corrected, the preselector characterization should be performed. Press **System, Alignments, Advanced, Characterize Preselector**. The characterization will take several minutes and the analyzer must not be interrupted during this time. If the analyzer is interrupted during the characterization process, the characterization data will be destroyed and it will be necessary to perform the entire process again.
- Is the analyzer displaying an error message? If so, refer to the Instrument Messages Guide.
- Check if the external frequency reference is selected but not available. Verify that it is selected by pressing **Input/Output, Freq Ref Input**. If **External** is selected, changing the setting to **Sense** allows the analyzer to sense the presence of an external reference and use it only if it is available. The frequency of the reference should be set correctly.
- If you are using a Windows program other than the instrument application, you may notice it running slow. Place the instrument application in single sweep/measurement.

TIP

You can get automatic electronic notification of new firmware releases and other product updates/information by subscribing to the *Keysight Technologies Test & Measurement E-Mail Notification Service* for your signal analyzer at <http://keysight.com/find/MyKeysight>

Problems with Microsoft Windows 7

The Microsoft Windows 7 operating system settings have been optimized for the best performance. Modification of these settings may degrade instrument performance and measurement speed. Those that can be safely modified are described in **“Settings that can be changed” on page 46.**

The X-Series if Signal Analyzers operate in an open Windows environment, so you can install software on the instrument. However, installation of non-approved software may affect instrument performance. Keysight does not warrant the performance with non-approved software installed.

Returning an Analyzer for Service

Calling Keysight Technologies

Keysight Technologies has offices around the world to provide you with complete support for your analyzer. To obtain servicing information or to order replacement parts, contact the nearest Keysight Technologies office listed below. In any correspondence or telephone conversations, refer to your analyzer by its product number, full serial number, and software revision.

Press **System**, **Show System**, and the product number, serial number, and software revision information will be displayed on your analyzer screen. A serial number label is also attached to the rear panel of the analyzer.

Locations for Keysight Technologies

Online assistance: <http://www.keysight.com/find/assist>

Americas

Canada
1 877 894 4414

Latin America
(305) 269 7500

United States
1 800 829 4444

Asia Pacific

Australia
1 800 629 485

China
800 810 0189

Hong Kong
800 938 693

India
1 800 112 929

Japan
0 120 (421) 345

Korea
080 769 0800

Malaysia
1 800 888 848

Singapore
1 800 375 8100

Taiwan
0800 047 866

Thailand
1 800226 008

Europe & Middle East

Austria
43 (0) 1 360 277 1571

Belgium
32 (0) 2 404 93 40

Denmark
45 70 13 15 15

Finland
358 (0) 10 855 2100

France
0825 010 700*
*0.125 Euros/minute

Germany
49 (0) 7031 464 6333

Ireland
1890 924 204

Israel
972-3-9288-504/544

Italy
39 02 92 60 8484

Netherlands
31 (0) 20 547 2111

Spain
34 (91) 631 3300

Sweden
0200-88 22 55

Switzerland
0800 80 53 53

United Kingdom
44 (0) 118 9276201

Other European Countries: <http://www.keysight.com/find/contactus>

Read the Warranty

The warranty for your analyzer is in the front of your Specifications Guide. Please read it and become familiar with its terms.

If your analyzer is covered by a separate maintenance agreement, please be familiar with its terms.

Service Options

Keysight Technologies offers several optional maintenance plans to service your analyzer after the warranty has expired. Call your Keysight Technologies office for full details.

If you want to service the analyzer yourself after the warranty expires, you can download the service documentation that provides all necessary test and maintenance information from the Keysight web page.

Packaging the Instrument

Use original packaging or comparable. It is best to pack the unit in the original factory packaging materials if they are available.

WARNING

Analyzer damage can result from using packaging materials other than those specified. Never use styrene pellets in any shape as packaging materials. They do not adequately cushion the equipment or prevent it from shifting in the carton. They cause equipment damage by generating static electricity and by lodging in the analyzer louvers, blocking airflow.

You can repackage the analyzer with commercially available materials, as follows:

Table 5-1

Step	Notes
1. Wrap the analyzer in anti-static plastic to reduce the possibility of damage caused by electrostatic discharge	
2. Use a strong shipping container.	The carton must be both large enough and strong enough to accommodate the analyzer. A double-walled, corrugated cardboard carton with 159 kg (350 lb) bursting strength is adequate. Allow at least 3 to 4 inches on all sides of the analyzer for packing material.
3. Surround the equipment with three to four inches of packing material and prevent the equipment from moving in the carton.	If packing foam is not available, the best alternative is plastic bubble-pak. This material looks like a plastic sheet filled with 1-1/4 inch air bubbles. Use the pink-colored bubble which reduces static electricity. Wrapping the equipment several times in this material should both protect the equipment and prevent it from moving in the carton.
4. Seal the shipping container securely with strong nylon adhesive tape.	
5. Mark the shipping container "FRAGILE, HANDLE WITH CARE" to assure careful handling.	
6. Retain copies of all shipping papers.	

Index

A

Auto-hide Taskbar, 86

B

battery replacement, 19

C

C drive usage, 57
 Computer Name, 72
 computer name
 how to locate it, 69
 connectors, front panel, 22
 contents of shipment, 10
 Control Panel
 taskbar, 86
 controlling Windows without a mouse, 66
 cooling the instrument, 11

D

D drive data storage, 57
 data storage, 57
 disk drive recovery process, 59
 display capture, 82
 Domain Name, 72
 drive C use, 57
 drive D use, 57
 drive recovery, 59

E

electrostatic discharge (ESD)
 protecting against, 20
 Embedded Web Server
 Get Data Page, 81
 Get Data Tab, 81
 Get Image Page, 82
 Get Image Tab, 82
 Help Page, 84
 Help Tab, 84
 SCPI Telnet Page, 83
 SCPI Telnet Tab, 83
 View & Modify Configuration Page, 79
 View & Modify Configuration Tab, 79
 Web Control SA Page, 80
 Web Control SA Tab, 80
 embedded web server, 76

F

fixing the disk drive, 59
 front panel
 connectors and keys, 22
 symbols, 35
 fuses, 17

H

hard drive recovery, 59
 Help
 Embedded Web Server, 84

I

initialization with mouse, 12
 installing programs to drive C, 57
 instrument location, 11
 instrument recovery, 59
 Instrument Recovery System, 59
 instrument ventilation, 11

K

Keypcode Commands
 Windows, 85
 keys, 22
 Keysight Technologies, calling, 91

L

line voltage, 17
 locating the instrument, 11

M

mouseless Windows navigation, 66
 My Documents location, 57

N

N9020A
 Computer Name, 72
 computer name, 69
 Domain Name, 72
 internet access, 76
 web access, 76
 windows system, 65
 navigating without a mouse, 66

O

operating remotely, 67
 operating system, 65

P

packaging, 94
 power cords, 17
 power source, 17
 problems with shipment, 10
 program storage, 57

R

rack mounting, 11
 rear panel
 symbols, 35
 rear panel features, 31
 recovering the hard drive, 59
 recovery process, 59
 Remote Desktop
 running, 70
 Remote Operation
 Connection Speed, 72
 remote operation, 67
 embedded web server, 76
 internet access, 76
 replacing battery, 19
 running Windows without a mouse, 66

S

saving data to internal drives, 57
 saving programs on C drive, 57
 SCPI
 Telnet Control, 83
 Screen Capture, 82
 service options, 93
 shipment contents, 10
 Shortcut keys
 Windows, 85
 storing data on D drive, 57
 symbols, on front and rear panels, 35
 system recovery, 59

T

Taskbar
 Windows, 86
 turn on
 with a mouse, 12

U

URL, sales and service, 92
User Accounts location, 57
using the instrument remotely, 67
using Windows without a mouse, 66

V

verifying contents, 10

W

warranty, 92
Windows, 66
7, 65
Control Panel, 86
Remote Desktop
Installing, 68
Setting up, 68
Screen Capture, 82
Shortcut keys, 85
taskbar
auto-hide, 86
Windows Remote Desktop, 67
options, 72
Options Dialog
Experience Tab, 72
General Tab, 72
running, 70
Setting up Remote Computer, 68
setting up the N9020A, 68
Setting up Windows Systems
7, 68



This information is subject to change without notice.

© Keysight Technologies 2015-2016

Edition 1, April 2016

N9040-90015

www.keysight.com